

# TEST REPORT

**Report No.:** S19090402201001

**Product:** INOI 2 Lite 2019 4Gb

**Model No.:** INOI 2 Lite 2019 4Gb

**Applicant:** INOI Limited

**Address:** Office 302, Dominion Centre 43 - 59 Queen`s road East  
Wanchai, Hong Kong

**Issued by:** Shenzhen NTEK Testing Technology Co., Ltd.

**Lab** 1/F, Building E, Fenda Science Park, Sanwei Community,  
Xixiang Street, Bao`an District, Shenzhen 518126 P.R.



**Location:** China

**Tel:** +86-755-6115 6588      Fax +86-755-6115 6599



This test report consists of 62 pages in total. It may be duplicated completely for legal use with the approval of the applicant. It should not be reproduced except in full, without the written approval of our laboratory. The client should not use it to claim product endorsement by NTEK. The test results in the report only apply to the tested sample. The test report shall be invalid without all the signatures of testing engineers, reviewer and approver. Any objections must be raised to NTEK within 15 days since the date when the report is received. It will not be taken into consideration beyond this limit.

**TEST REPORT**  
**IEC/EN 60950-1**  
**Information technology equipment – Safety –**  
**Part 1: General requirements**

<b>Report Number</b> .....	S19090402201001
Tested by (name + signature).....	Keny Fu 
Approved by (name + signature) .....	Helen Lin 
Date of issue.....	2019-11-11
<b>Testing Laboratory</b> .....	Shenzhen NTEK Testing Technology Co., Ltd.
Address.....	1/F, Building E, Fenda Science Park, Sanwei Community, Xixiang Street, Bao'an District, Shenzhen 518126 P.R. China
Applicant's name .....	INOI Limited
Address.....	Office 302, Dominion Centre 43 - 59 Queen`s road East Wanchai, Hong Kong
Manufacturer's name.....	INOI Limited
Address.....	Office 302, Dominion Centre 43 - 59 Queen`s road East Wanchai, Hong Kong
<b>Test specification:</b>	
Standard .....	<input type="checkbox"/> IEC 60950-1:2005 (Second Edition) + Am 1:2009 + Am 2:2013 <input checked="" type="checkbox"/> EN 60950-1:2006 + A11:2009 + A1:2010+A12:2011+A2:2013
Test procedure.....	CE procedure
Non-standard test method.....	N/A
<b>Test Report Form No.</b> .....	IECEN60950_1F
Test Report Form(s) Originator .....	SGS Fimko Ltd
Master TRF .....	Dated 2014-02
<b>Copyright © 2014 IEC System of Conformity Assessment Schemes for Electrotechnical Equipment and Components (IECEE System). All rights reserved.</b>	
This publication may be reproduced in whole or in part for non-commercial purposes as long as the IECEE is acknowledged as copyright owner and source of the material. IECEE takes no responsibility for and will not assume liability for damages resulting from the reader's interpretation of the reproduced material due to its placement and context.	
<b>Test item description</b> .....	INOI 2 Lite 2019 4Gb
Trade Mark .....	N/A
Model/Type reference.....	INOI 2 Lite 2019 4Gb
Ratings.....	Input: DC 5V, 1000mA

<b>Test item particulars..... :</b>	
<b>Equipment mobility.....:</b>	<input type="checkbox"/> movable <input checked="" type="checkbox"/> hand-held <input type="checkbox"/> transportable <input type="checkbox"/> stationary <input type="checkbox"/> for building-in <input type="checkbox"/> direct plug-in
<b>Connection to the mains.....:</b>	<input type="checkbox"/> pluggable equipment <input type="checkbox"/> type A <input type="checkbox"/> type B <input type="checkbox"/> permanent connection <input type="checkbox"/> detachable power supply cord <input type="checkbox"/> non-detachable power supply cord <input checked="" type="checkbox"/> not directly connected to the mains
<b>Operating condition.....:</b>	<input checked="" type="checkbox"/> continuous <input type="checkbox"/> rated operating / resting time:
<b>Access location .....</b>	<input checked="" type="checkbox"/> operator accessible <input type="checkbox"/> restricted access location
<b>Over voltage category (OVC) .....</b>	<input type="checkbox"/> OVC I <input type="checkbox"/> OVC II <input type="checkbox"/> OVC III <input type="checkbox"/> OVC IV <input checked="" type="checkbox"/> other:
<b>Mains supply tolerance (%) or absolute mains supply values .....</b>	N/A
<b>Tested for IT power systems .....</b>	<input type="checkbox"/> Yes <input checked="" type="checkbox"/> No
<b>IT testing, phase-phase voltage (V) .....</b>	N/A
<b>Class of equipment .....</b>	<input type="checkbox"/> Class I <input type="checkbox"/> Class II <input checked="" type="checkbox"/> Class III <input type="checkbox"/> Not classified
<b>Considered current rating of protective device as part of the building installation (A) .....</b>	N/A
<b>Pollution degree (PD) .....</b>	<input type="checkbox"/> PD 1 <input checked="" type="checkbox"/> PD 2 <input type="checkbox"/> PD 3
<b>IP protection class .....</b>	IPX0
<b>Altitude during operation (m) .....</b>	≤2000
<b>Altitude of test laboratory (m) .....</b>	<500m
<b>Mass of equipment (kg) .....</b>	0.169kg
<b>Possible test case verdicts:</b>	
- test case does not apply to the test object.....: N(/A)	
- test object does meet the requirement.....: P (Pass)	
- test object does not meet the requirement.....: F (Fail)	
<b>Testing..... :</b>	
<b>Date of receipt of test item .....</b>	2019-11-04
<b>Date (s) of performance of tests .....</b>	From 2019-11-04 to 2019-11-08
<b>General remarks:</b>	
<p>The test results presented in this report relate only to the object tested.          This report shall not be reproduced, except in full, without the written approval of the Issuing testing laboratory.          "(see Enclosure #)" refers to additional information appended to the report.          "(see appended table)" refers to a table appended to the report.</p> <p>Throughout this report a <input type="checkbox"/> comma / <input checked="" type="checkbox"/> point is used as the decimal separator.</p>	

**General product information:**

Brief description of the test sample:

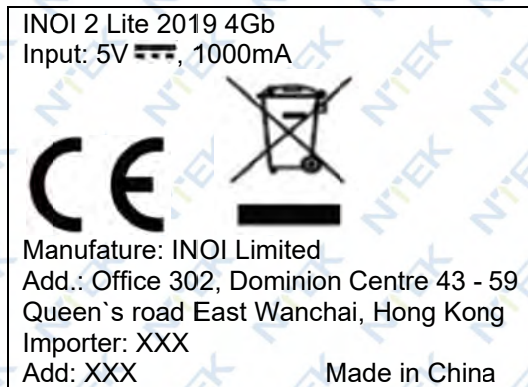
- The equipment is an INOI 2 Lite 2019 4Gb which can be charged by 5Vdc of external adapter, and powered by 3.7V Li-ion battery, therefore, its circuits are considered as SELV of class III equipment.
- The testing operating ambient temperature to testing sample is considered as 40°C.

**Abbreviations used in the report:**

- |                                      |      |                            |       |
|--------------------------------------|------|----------------------------|-------|
| - Normal conditions                  | N.C. | - single fault conditions  | S.F.C |
| - functional insulation              | OP   | - basic insulation         | BI    |
| - double insulation                  | DI   | - supplementary insulation | SI    |
| - between parts of opposite polarity | BOP  | - reinforced insulation    | RI    |

Indicate used abbreviations (if any):


**Copy of marking plate:**



Remark:

- The CE marking and WEEE symbol (if any) should be at least 5.0 mm and 7.0 mm respectively in height.

IEC/EN 60950-1			
Clause	Requirement + Test	Result + Remark	Verdict
<b>1</b>	<b>GENERAL</b>		P
<b>1.5</b>	<b>Components</b>		P
1.5.1	General		P
	Comply with IEC 60950-1 or relevant component standard	(see appended tables 1.5.1)	P
1.5.2	Evaluation and testing of components	<p>Certified components are used in accordance with their ratings, certifications and they comply with applicable parts of this standard.</p> <p>Components not certified are used in accordance with their ratings and they comply with applicable parts of IEC 60950-1 and the relevant component standard.</p> <p>Components, for which no relevant IEC-standard exists, have been tested under the conditions occurring in the equipment, using applicable parts of IEC 60950-1.</p>	P
1.5.3	Thermal controls	No thermal controls	N
1.5.4	Transformers	No such transformer in the EUT	N
1.5.5	Interconnecting cables		N
1.5.6	Capacitors bridging insulation	No such capacitor	N
1.5.7	Resistors bridging insulation		N
1.5.7.1	Resistors bridging functional, basic or supplementary insulation	Functional insulation only	N
1.5.7.2	Resistors bridging double or reinforced insulation between a.c. mains and other circuits		N
1.5.7.3	Resistors bridging double or reinforced insulation between a.c. mains and antenna or coaxial cable		N
1.5.8	Components in equipment for IT power systems	No connection to the AC mains supply.	N
1.5.9	Surge suppressors	No surge suppressors	N
1.5.9.1	General		N
1.5.9.2	Protection of VDRs		N
1.5.9.3	Bridging of functional insulation by a VDR		N
1.5.9.4	Bridging of basic insulation by a VDR		N

IEC/EN 60950-1			
Clause	Requirement + Test	Result + Remark	Verdict
1.5.9.5	Bridging of supplementary, double or reinforced insulation by a VDR		N
<b>1.6</b>	<b>Power interface</b>		P
1.6.1	AC power distribution systems		N
1.6.2	Input current	(See appendix table 1.6.2)	P
1.6.3	Voltage limit of hand-held equipment		P
1.6.4	Neutral conductor	Class III equipment	N
<b>1.7</b>	<b>Marking and instructions</b>		P
1.7.1	Power rating and identification markings		P
1.7.1.1	Power rating marking		P
	Multiple mains supply connections.....:		N
	Rated voltage(s) or voltage range(s) (V) .....	5.0V	P
	Symbol for nature of supply, for d.c. only .....		P
	Rated frequency or rated frequency range (Hz) ... :		N
	Rated current (mA or A) .....	1000mA	P
1.7.1.2	Identification markings		P
	Manufacturer's name or trade-mark or identification mark .....	(See marking plate)	P
	Model identification or type reference .....	(See marking plate)	P
	Symbol for Class II equipment only .....	Class III equipment	N
	Other markings and symbols .....	Additional symbols or marking does not give rise to misunderstanding.	P
1.7.1.3	Use of graphical symbols		N
1.7.2	Safety instructions and marking	Operating Instructions provided	P
1.7.2.1	General		P
1.7.2.2	Disconnect devices	No connection to the mains supply	N
1.7.2.3	Overcurrent protective device	Not such equipments	N
1.7.2.4	IT power distribution systems		N
1.7.2.5	Operator access with a tool		N
1.7.2.6	Ozone		N
1.7.3	Short duty cycles	Continuous operation	N
1.7.4	Supply voltage adjustment .....	No supply voltage adjustment	N

IEC/EN 60950-1			
Clause	Requirement + Test	Result + Remark	Verdict
	Methods and means of adjustment; reference to installation instructions .....		N
1.7.5	Power outlets on the equipment .....	No standard power outlets.	N
1.7.6	Fuse identification (marking, special fusing characteristics, cross-reference) .....		N
1.7.7	Wiring terminals		N
1.7.7.1	Protective earthing and bonding terminals .....		N
1.7.7.2	Terminals for a.c. mains supply conductors		N
1.7.7.3	Terminals for d.c. mains supply conductors		N
1.7.8	Controls and indicators		P
1.7.8.1	Identification, location and marking .....		N
1.7.8.2	Colours .....		P
1.7.8.3	Symbols according to IEC 60417.....		N
1.7.8.4	Markings using figures .....		N
1.7.9	Isolation of multiple power sources .....		N
1.7.10	Thermostats and other regulating devices .....	Not used.	N
1.7.11	Durability	After rubbing test there was no damage to the label. The marking on the label did not fade. There was neither curling nor lifting of the label edge.	P
1.7.12	Removable parts		P
1.7.13	Replaceable batteries.....	Statement in instruction	P
	Language(s) .....	English or local language	—
1.7.14	Equipment for restricted access locations.....	Not limited for use in restricted access locations.	N

<b>2</b>	<b>PROTECTION FROM HAZARDS</b>		P
<b>2.1</b>	<b>Protection from electric shock and energy hazards</b>		P
2.1.1	Protection in operator access areas	No hazardous parts in operator access areas.	P
2.1.1.1	Access to energized parts	Only SELV circuits involved and no energized parts.	N
	<b>Test by inspection</b> .....		N
	Test with test finger (Figure 2A) .....		N
	Test with test pin (Figure 2B) .....		N
	Test with test probe (Figure 2C) .....		N
2.1.1.2	<b>Battery compartments</b>		N

IEC/EN 60950-1			
Clause	Requirement + Test	Result + Remark	Verdict
2.1.1.3	Access to ELV wiring		N
	Working voltage (V <sub>peak</sub> or V <sub>rms</sub> ); minimum distance through insulation (mm)	(see appended tables 2.10.2 and 2.10.5)	—
2.1.1.4	Access to hazardous voltage circuit wiring		N
2.1.1.5	Energy hazards .....	No energy hazards.	N
2.1.1.6	Manual controls	No such controls.	N
2.1.1.7	Discharge of capacitors in equipment	No X-cap used.	N
	Measured voltage (V); time-constant (s).....		—
2.1.1.8	Energy hazards – d.c. mains supply		N
	a) Capacitor connected to the d.c. mains supply :		N
	b) Internal battery connected to the d.c. mains supply :		N
2.1.1.9	Audio amplifiers .....		N
2.1.2	Protection in service access areas		N
2.1.3	Protection in restricted access locations		N

<b>2.2</b>	<b>SELV circuits</b>		P
2.2.1	General requirements	Class III equipment (supplied by SELV).	P
2.2.2	Voltages under normal conditions (V) .....	< 60V d.c. or <42.4Vpk.	P
2.2.3	Voltages under fault conditions (V) .....	< 60V d.c. or <42.4Vpk	P
2.2.4	Connection of SELV circuits to other circuits .....	Connect to SELV circuit only	P

<b>2.3</b>	<b>TNV circuits</b>		N
2.3.1	Limits	No TNV circuits	N
	Type of TNV circuits .....		—
2.3.2	Separation from other circuits and from accessible parts		N
2.3.2.1	General requirements		N
2.3.2.2	Protection by basic insulation		N
2.3.2.3	Protection by earthing		N
2.3.2.4	Protection by other constructions .....		N
2.3.3	Separation from hazardous voltages		N
	Insulation employed.....		—
2.3.4	Connection of TNV circuits to other circuits		N
	Insulation employed.....		—



IEC/EN 60950-1			
Clause	Requirement + Test	Result + Remark	Verdict
2.3.5	Test for operating voltages generated externally		N
<b>2.4</b>	<b>Limited current circuits</b>		N
2.4.1	General requirements	Class III	N
2.4.2	Limit values		N
	Frequency (Hz) .....		—
	Measured current (mA).....		—
	Measured voltage (V) .....		—
	Measured circuit capacitance (nF or $\mu$ F) .....		—
2.4.3	Connection of limited current circuits to other circuits		N
<b>2.5</b>	<b>Limited power sources</b>		N
	a) Inherently limited output		N
	b) Impedance limited output		N
	c) Regulating network or IC current limiter, limits output under normal operating and single fault condition		N
	Use of integrated circuit (IC) current limiters		N
	d) Overcurrent protective device limited output		N
	Max. output voltage (V), max. output current (A), max. apparent power (VA).....	(See appendix table 2.5)	—
	Current rating of overcurrent protective device (A) ..		—
<b>2.6</b>	<b>Provisions for earthing and bonding</b>		N
2.6.1	Protective earthing	Class III equipment	N
2.6.2	Functional earthing		N
	Use of symbol for functional earthing .....		N
2.6.3	Protective earthing and protective bonding conductors		N
2.6.3.1	General		N
2.6.3.2	Size of protective earthing conductors		N
	Rated current (A), cross-sectional area ( $\text{mm}^2$ ), AWG .....		—
2.6.3.3	Size of protective bonding conductors		N
	Rated current (A), cross-sectional area ( $\text{mm}^2$ ), AWG .....		—

IEC/EN 60950-1			
Clause	Requirement + Test	Result + Remark	Verdict

	Protective current rating (A), cross-sectional area (mm <sup>2</sup> ), AWG..... :		—
2.6.3.4	Resistance of earthing conductors and their terminations; resistance (Ω), voltage drop (V), test current (A), duration (min) .....		N
2.6.3.5	Colour of insulation .....		N
2.6.4	Terminals		N
2.6.4.1	General		N
2.6.4.2	Protective earthing and bonding terminals		N
	Rated current (A), type, nominal thread diameter (mm) .....		—
2.6.4.3	Separation of the protective earthing conductor from protective bonding conductors		N
2.6.5	Integrity of protective earthing		N
2.6.5.1	Interconnection of equipment		N
2.6.5.2	Components in protective earthing conductors and protective bonding conductors		N
2.6.5.3	Disconnection of protective earth		N
2.6.5.4	Parts that can be removed by an operator		N
2.6.5.5	Parts removed during servicing		N
2.6.5.6	Corrosion resistance		N
2.6.5.7	Screws for protective bonding		N
2.6.5.8	Reliance on telecommunication network or cable distribution system		N

<b>2.7</b>	<b>Overcurrent and earth fault protection in primary circuits</b>		N
2.7.1	Basic requirements		N
	Instructions when protection relies on building installation		N
2.7.2	Faults not simulated in 5.3.7		N
2.7.3	Short-circuit backup protection		N
2.7.4	Number and location of protective devices .....		N
2.7.5	Protection by several devices		N
2.7.6	Warning to service personnel .....		N

<b>2.8</b>	<b>Safety interlocks</b>		N
2.8.1	General principles	No safety interlocks	N
2.8.2	Protection requirements		N

IEC/EN 60950-1			
Clause	Requirement + Test	Result + Remark	Verdict
2.8.3	Inadvertent reactivation		N
2.8.4	Fail-safe operation		N
	Protection against extreme hazard		N
2.8.5	Moving parts		N
2.8.6	Overriding		N
2.8.7	Switches, relays and their related circuits		N
2.8.7.1	Separation distances for contact gaps and their related circuits (mm) .....		N
2.8.7.2	Overload test		N
2.8.7.3	Endurance test		N
2.8.7.4	Electric strength test		N
2.8.8	Mechanical actuators		N

<b>2.9</b>	<b>Electrical insulation</b>		P
2.9.1	Properties of insulating materials	Class III equipment	P
2.9.2	Humidity conditioning		N
	Relative humidity (%), temperature (°C) .....		—
2.9.3	Grade of insulation		P
2.9.4	Separation from hazardous voltages		N
	Method(s) used .....		—

<b>2.10</b>	<b>Clearances, creepage distances and distances through insulation</b>		N
2.10.1	General	Only SELV circuits inside the EUT. Functional insulation evaluated in accordance with clause 5.3.4. c).	N
2.10.1.1	Frequency .....		N
2.10.1.2	Pollution degrees .....		N
2.10.1.3	Reduced values for functional insulation	The functional insulation complied with clause 5.3.4.	N
2.10.1.4	Intervening unconnected conductive parts		N
2.10.1.5	Insulation with varying dimensions		N
2.10.1.6	Special separation requirements		N
2.10.1.7	Insulation in circuits generating starting pulses		N
2.10.2	Determination of working voltage		N
2.10.2.1	General		N
2.10.2.2	RMS working voltage		N

IEC/EN 60950-1			
Clause	Requirement + Test	Result + Remark	Verdict
2.10.2.3	Peak working voltage		N
2.10.3	Clearances		N
2.10.3.1	General		N
2.10.3.2	Mains transient voltages		N
	a) AC mains supply .....		N
	b) Earthed d.c. mains supplies .....		N
	c) Unearthed d.c. mains supplies .....		N
	d) Battery operation .....		N
2.10.3.3	Clearances in primary circuits		N
2.10.3.4	Clearances in secondary circuits		N
2.10.3.5	Clearances in circuits having starting pulses		N
2.10.3.6	Transients from a.c. mains supply .....		N
2.10.3.7	Transients from d.c. mains supply .....		N
2.10.3.8	Transients from telecommunication networks and cable distribution systems .....		N
2.10.3.9	Measurement of transient voltage levels		N
	a) Transients from a mains supply		N
	For an a.c. mains supply .....		N
	For a d.c. mains supply .....		N
	b) Transients from a telecommunication network :		N
2.10.4	Creepage distances		N
2.10.4.1	General		N
2.10.4.2	Material group and comparative tracking index		N
	CTI tests .....	Material group IIIb is assumed to be used	—
2.10.4.3	Minimum creepage distances		N
2.10.5	Solid insulation		N
2.10.5.1	General		N
2.10.5.2	Distances through insulation		N
2.10.5.3	Insulating compound as solid insulation	No such construction used.	N
2.10.5.4	Semiconductor devices	Not used.	N
2.10.5.5.	Cemented joints	Not used.	N
2.10.5.6	Thin sheet material – General	Not used.	N
2.10.5.7	Separable thin sheet material	Not used.	N
	Number of layers (pcs) .....		—
2.10.5.8	Non-separable thin sheet material	Not used.	N

IEC/EN 60950-1			
Clause	Requirement + Test	Result + Remark	Verdict
2.10.5.9	Thin sheet material – standard test procedure	Not used.	N
	Electric strength test		—
2.10.5.10	Thin sheet material – alternative test procedure	Not used.	N
	Electric strength test		—
2.10.5.11	Insulation in wound components	Not used.	N
2.10.5.12	Wire in wound components		N
	Working voltage .....		N
	a) Basic insulation not under stress .....		N
	b) Basic, supplementary, reinforced insulation .....		N
	c) Compliance with Annex U .....		N
	Two wires in contact inside wound component; angle between 45° and 90° .....		N
2.10.5.13	Wire with solvent-based enamel in wound components		N
	Electric strength test		—
	Routine test		N
2.10.5.14	Additional insulation in wound components		N
	Working voltage .....		N
	- Basic insulation not under stress .....		N
	- Supplementary, reinforced insulation .....		N
2.10.6	Construction of printed boards		N
2.10.6.1	Uncoated printed boards		N
2.10.6.2	Coated printed boards		N
2.10.6.3	Insulation between conductors on the same inner surface of a printed board		N
2.10.6.4	Insulation between conductors on different layers of a printed board		N
	Distance through insulation		N
	Number of insulation layers (pcs).....		N
2.10.7	Component external terminations		N
2.10.8	Tests on coated printed boards and coated components		N
2.10.8.1	Sample preparation and preliminary inspection		N
2.10.8.2	Thermal conditioning		N
2.10.8.3	Electric strength test		N
2.10.8.4	Abrasion resistance test		N
2.10.9	Thermal cycling		N

IEC/EN 60950-1			
Clause	Requirement + Test	Result + Remark	Verdict
2.10.10	Test for Pollution Degree 1 environment and insulating compound		N
2.10.11	Tests for semiconductor devices and cemented joints		N
2.10.12	Enclosed and sealed parts		N

<b>3</b>	<b>Wiring, connections and supply</b>		P
3.1	General		P
3.1.1	Current rating and overcurrent protection	Internal wiring gauge is suitable for current intended to be carried.	P
3.1.2	Protection against mechanical damage	Wires do not touch sharp edges which could damage the insulation and cause hazards.	P
3.1.3	Securing of internal wiring		N
3.1.4	Insulation of conductors	Insulation on internal conductors is considered to be of adequate quality and suitable for the application and the working voltage involved.	P
3.1.5	Beads and ceramic insulators		N
3.1.6	Screws for electrical contact pressure		N
3.1.7	Insulating materials in electrical connections		N
3.1.8	Self-tapping and spaced thread screws		N
3.1.9	Termination of conductors		N
	10 N pull test		N
3.1.10	Sleeving on wiring		N

<b>3.2</b>	<b>Connection to a mains supply</b>		N
3.2.1	Means of connection		N
3.2.1.1	Connection to an a.c. mains supply		N
3.2.1.2	Connection to a d.c. mains supply		N
3.2.2	Multiple supply connections		N
3.2.3	Permanently connected equipment		N
	Number of conductors, diameter of cable and conduits (mm) .....		—
3.2.4	Appliance inlets		N
3.2.5	Power supply cords		N

IEC/EN 60950-1			
Clause	Requirement + Test	Result + Remark	Verdict
3.2.5.1	AC power supply cords		N
	Type .....		—
	Rated current (A), cross-sectional area (mm <sup>2</sup> ), AWG .....		—
3.2.5.2	DC power supply cords		N
3.2.6	Cord anchorages and strain relief		N
	Mass of equipment (kg), pull (N) .....		—
	Longitudinal displacement (mm) .....		—
3.2.7	Protection against mechanical damage		N
3.2.8	Cord guards		N
	Diameter or minor dimension D (mm); test mass (g) .....		—
	Radius of curvature of cord (mm) .....		—
3.2.9	Supply wiring space		N

<b>3.3</b>	<b>Wiring terminals for connection of external conductors</b>		N
3.3.1	Wiring terminals	No such wiring terminals	N
3.3.2	Connection of non-detachable power supply cords		N
3.3.3	Screw terminals		N
3.3.4	Conductor sizes to be connected		N
	Rated current (A), cord/cable type, cross-sectional area (mm <sup>2</sup> ) .....		—
3.3.5	Wiring terminal sizes		N
	Rated current (A), type, nominal thread diameter (mm) .....		—
3.3.6	Wiring terminal design		N
3.3.7	Grouping of wiring terminals		N
3.3.8	Stranded wire		N

<b>3.4</b>	<b>Disconnection from the mains supply</b>		N
3.4.1	General requirement		N
3.4.2	Disconnect devices		N
3.4.3	Permanently connected equipment		N
3.4.4	Parts which remain energized		N
3.4.5	Switches in flexible cords		N
3.4.6	Number of poles - single-phase and d.c. equipment		N

IEC/EN 60950-1			
Clause	Requirement + Test	Result + Remark	Verdict
3.4.7	Number of poles - three-phase equipment		N
3.4.8	Switches as disconnect devices		N
3.4.9	Plugs as disconnect devices		N
3.4.10	Interconnected equipment		N
3.4.11	Multiple power sources		N

<b>3.5</b>	<b>Interconnection of equipment</b>		P
3.5.1	General requirements		P
3.5.2	Types of interconnection circuits ..... :	SELV	P
3.5.3	ELV circuits as interconnection circuits		N
3.5.4	Data ports for additional equipment		P

<b>4</b>	<b>Physical requirements</b>		P
4.1	Stability		N
	Angle of 10°		N
	Test force (N) ..... :		N

<b>4.2</b>	<b>Mechanical strength</b>		P
4.2.1	General		P
	Rack-mounted equipment.	(see Annex DD)	N
4.2.2	Steady force test, 10 N	10N force applied to components	P
4.2.3	Steady force test, 30 N		N
4.2.4	Steady force test, 250 N		P
4.2.5	Impact test		N
	Fall test		N
	Swing test		N
4.2.6	Drop test; height (mm) ..... :	1000mm, 3drops	P
4.2.7	Stress relief test	70°C, 7h	P
4.2.8	Cathode ray tubes		N
	Picture tube separately certified ..... :	(see separate test report or attached certificate)	N
4.2.9	High pressure lamps		N
4.2.10	Wall or ceiling mounted equipment; force (N) ..... :		N

<b>4.3</b>	<b>Design and construction</b>		P
------------	--------------------------------	--	---



IEC/EN 60950-1			
Clause	Requirement + Test	Result + Remark	Verdict
4.3.1	Edges and corners	Edges or corners are rounded.	P
4.3.2	Handles and manual controls; force (N)..... :	No handles or manual controls provided.	N
4.3.3	Adjustable controls	No adjustable controls provided.	N
4.3.4	Securing of parts	Mechanical fixings in such a way designed that they will withstand mechanical stress occurring in normal use.	P
4.3.5	Connection by plugs and sockets		N
4.3.6	Direct plug-in equipment	Not direct plug-in equipment	N
	Torque .....		—
	Compliance with the relevant mains plug standard		N
4.3.7	Heating elements in earthed equipment	No heating elements provided.	N
4.3.8	Batteries	(See appended table 4.3.8)	P
	- Overcharging of a rechargeable battery		P
	- Unintentional charging of a non-rechargeable battery		N
	- Reverse charging of a rechargeable battery	Construction prevented reverse	N
	- Excessive discharging rate for any battery		P
4.3.9	Oil and grease	No oil and grease.	N
4.3.10	Dust, powders, liquids and gases	No dust, powders, liquids and gases.	N
4.3.11	Containers for liquids or gases	No containers for liquid and gases.	N
4.3.12	Flammable liquids .....	No flammable liquid.	N
	Quantity of liquid (l) .....		N
	Flash point (°C) .....		N
4.3.13	Radiation		P
4.3.13.1	General		P
4.3.13.2	Ionizing radiation		N
	Measured radiation (pA/kg) .....		—
	Measured high-voltage (kV) .....		—
	Measured focus voltage (kV) .....		—
	CRT markings .....		—
4.3.13.3	Effect of ultraviolet (UV) radiation on materials	The equipment does not produce significant UV radiation.	N

IEC/EN 60950-1			
Clause	Requirement + Test	Result + Remark	Verdict
	Part, property, retention after test, flammability classification .....		N
4.3.13.4	Human exposure to ultraviolet (UV) radiation .....	The equipment does not produce significant UV radiation.	N
4.3.13.5	Lasers (including laser diodes) and LEDs		P
4.3.13.5.1	Lasers (including laser diodes)		P
	Laser class .....		—
4.3.13.5.2	Light emitting diodes (LEDs)	Torch LED, Risk Group 1	—
4.3.13.6	Other types .....		N
<b>4.4</b>	<b>Protection against hazardous moving parts</b>		N
4.4.1	General	No moving parts	N
4.4.2	Protection in operator access areas .....		N
	Household and home/office document/media shredders	(see Annex EE)	N
4.4.3	Protection in restricted access locations .....		N
4.4.4	Protection in service access areas		N
4.4.5	Protection against moving fan blades		N
4.4.5.1	General		N
	Not considered to cause pain or injury. a).....		N
	Is considered to cause pain, not injury. b) .....		N
	Considered to cause injury. c) .....		N
4.4.5.2	Protection for users		N
	Use of symbol or warning .....		N
4.4.5.3	Protection for service persons		N
	Use of symbol or warning .....		N
<b>4.5</b>	<b>Thermal requirements</b>		P
4.5.1	General		P
4.5.2	Temperature tests		P
	Normal load condition per Annex L .....		—
4.5.3	Temperature limits for materials	(see appended table 4.5)	P
4.5.4	Touch temperature limits	(see appended table 4.5)	P
4.5.5	Resistance to abnormal heat .....	(see appended table 4.5.5) No live parts	N

IEC/EN 60950-1			
Clause	Requirement + Test	Result + Remark	Verdict
<b>4.6</b>	<b>Openings in enclosures</b>		P
4.6.1	Top and side openings		N
	Dimensions (mm) .....		—
4.6.2	Bottoms of fire enclosures		P
	Construction of the bottom, dimensions (mm) ..	No opening	—
4.6.3	Doors or covers in fire enclosures		N
4.6.4	Openings in transportable equipment		P
4.6.4.1	Constructional design measures		P
	Dimensions (mm) .....		—
4.6.4.2	Evaluation measures for larger openings		N
4.6.4.3	Use of metallized parts		N
4.6.5	Adhesives for constructional purposes		N
	Conditioning temperature (°C), time (weeks).....		—
<b>4.7</b>	<b>Resistance to fire</b>		P
4.7.1	Reducing the risk of ignition and spread of flame		P
	Method 1, selection and application of components wiring and materials	(see appended table 4.7)	P
	Method 2, application of all of simulated fault condition tests	(see appended table 5.3)	N
4.7.2	Conditions for a fire enclosure		P
4.7.2.1	Parts requiring a fire enclosure	The battery was not complied with requirement of clause 2.5	P
4.7.2.2	Parts not requiring a fire enclosure		N
4.7.3	Materials		P
4.7.3.1	General		P
4.7.3.2	Materials for fire enclosures	Plastic enclosure: V-0	P
4.7.3.3	Materials for components and other parts outside fire enclosures		N
4.7.3.4	Materials for components and other parts inside fire enclosures	PCB: V-1	P
4.7.3.5	Materials for air filter assemblies	No air filters assemblies.	N
4.7.3.6	Materials used in high-voltage components	No high voltage component.	N
<b>5</b>	<b>ELECTRICAL REQUIREMENTS AND SIMULATED ABNORMAL CONDITIONS</b>		<b>P</b>
<b>5.1</b>	<b>Touch current and protective conductor current</b>		<b>N</b>
5.1.1	General	(see appended Table 5.1)	N

IEC/EN 60950-1			
Clause	Requirement + Test	Result + Remark	Verdict
5.1.2	Configuration of equipment under test (EUT)		N
5.1.2.1	Single connection to an a.c. mains supply		N
5.1.2.2	Redundant multiple connections to an a.c. mains supply		N
5.1.2.3	Simultaneous multiple connections to an a.c. mains supply		N
5.1.3	Test circuit		N
5.1.4	Application of measuring instrument	See Annex D	N
5.1.5	Test procedure		N
5.1.6	Test measurements		N
	Supply voltage (V) .....		—
	Measured touch current (mA) .....	(See appended table 5.1)	—
	Max. allowed touch current (mA) .....	(See appended table 5.1)	—
	Measured protective conductor current (mA) .....		—
	Max. allowed protective conductor current (mA) .....		—
5.1.7	Equipment with touch current exceeding 3,5 mA		N
5.1.7.1	General .....		N
5.1.7.2	Simultaneous multiple connections to the supply		N
5.1.8	Touch currents to telecommunication networks and cable distribution systems and from telecommunication networks		N
5.1.8.1	Limitation of the touch current to a telecommunication network or to a cable distribution system		N
	Supply voltage (V) .....		—
	Measured touch current (mA) .....		—
	Max. allowed touch current (mA) .....		—
5.1.8.2	Summation of touch currents from telecommunication networks		N
	a) EUT with earthed telecommunication ports .....		N
	b) EUT whose telecommunication ports have no reference to protective earth		N
<b>5.2</b>	<b>Electric strength</b>		N
5.2.1	General	(see appended table 5.2)	N
5.2.2	Test procedure	(see appended table 5.2)	N

IEC/EN 60950-1			
Clause	Requirement + Test	Result + Remark	Verdict

<b>5.3</b>	<b>Abnormal operating and fault conditions</b>		P
5.3.1	Protection against overload and abnormal operation	(see appended table 5.3)	P
5.3.2	Motors		N
5.3.3	Transformers		N
5.3.4	Functional insulation .....	(see appended table 5.3)	P
5.3.5	Electromechanical components	No electromechanical component	N
5.3.6	Audio amplifiers in ITE .....		N
5.3.7	Simulation of faults	(see appended table 5.3)	P
5.3.8	Unattended equipment	None of them are used.	N
5.3.9	Compliance criteria for abnormal operating and fault conditions	No fire propagated beyond the equipment. No molten metal was emitted.	P
5.3.9.1	During the tests	Ditto	P
5.3.9.2	After the tests	Ditto	P

<b>6</b>	<b>CONNECTION TO TELECOMMUNICATION NETWORKS</b>		N
<b>6.1</b>	<b>Protection of telecommunication network service persons, and users of other equipment connected to the network, from hazards in the equipment</b>		N
6.1.1	Protection from hazardous voltages		N
6.1.2	Separation of the telecommunication network from earth		N
6.1.2.1	Requirements	(see appended table 5.2)	N
	Supply voltage (V) .....		—
	Current in the test circuit (mA) .....		—
6.1.2.2	Exclusions .....		N

<b>6.2</b>	<b>Protection of equipment users from overvoltages on telecommunication networks</b>		N
6.2.1	Separation requirements		N
6.2.2	Electric strength test procedure		N
6.2.2.1	Impulse test	(see appended table 5.2)	N
6.2.2.2	Steady-state test	(see appended table 5.2)	N
6.2.2.3	Compliance criteria		N

<b>6.3</b>	<b>Protection of the telecommunication wiring system from overheating</b>		N
	Max. output current (A) .....		—

IEC/EN 60950-1			
Clause	Requirement + Test	Result + Remark	Verdict
	Current limiting method .....		—
<b>7</b>	<b>CONNECTION TO CABLE DISTRIBUTION SYSTEMS</b>		N
<b>7.1</b>	<b>General</b>		N
7.2	Protection of cable distribution system service persons, and users of other equipment connected to the system, from hazardous voltages in the equipment		N
7.3	Protection of equipment users from overvoltages on the cable distribution system		N
7.4	Insulation between primary circuits and cable distribution systems		N
7.4.1	General		N
7.4.2	Voltage surge test	(see appended table 5.2)	N
7.4.3	Impulse test	(see appended table 5.2)	N
<b>A</b>	<b>ANNEX A, TESTS FOR RESISTANCE TO HEAT AND FIRE</b>		N
<b>A.1</b>	<b>Flammability test for fire enclosures of movable equipment having a total mass exceeding 18 kg, and of stationary equipment (see 4.7.3.2)</b>		N
A.1.1	Samples .....		—
	Wall thickness (mm) .....		—
A.1.2	Conditioning of samples; temperature (°C) .....		N
A.1.3	Mounting of samples .....		N
A.1.4	Test flame (see IEC 60695-11-3)		N
	Flame A, B, C or D .....		—
A.1.5	Test procedure		N
A.1.6	Compliance criteria		N
	Sample 1 burning time (s) .....		—
	Sample 2 burning time (s) .....		—
	Sample 3 burning time (s) .....		—
<b>A.2</b>	<b>Flammability test for fire enclosures of movable equipment having a total mass not exceeding 18 kg, and for material and components located inside fire enclosures (see 4.7.3.2 and 4.7.3.4)</b>		N
A.2.1	Samples, material .....		—
	Wall thickness (mm) .....		—
A.2.2	Conditioning of samples; temperature (°C) .....		N
A.2.3	Mounting of samples .....		N

IEC/EN 60950-1			
Clause	Requirement + Test	Result + Remark	Verdict
A.2.4	Test flame (see IEC 60695-11-4)		N
	Flame A, B or C .....		—
A.2.5	Test procedure		N
A.2.6	Compliance criteria		N
	Sample 1 burning time (s) .....		—
	Sample 2 burning time (s) .....		—
	Sample 3 burning time (s) .....		—
A.2.7	Alternative test acc. to IEC 60695-11-5, cl. 5 and 9		N
	Sample 1 burning time (s) .....		—
	Sample 2 burning time (s) .....		—
	Sample 3 burning time (s) .....		—
<b>A.3</b>	<b>Hot flaming oil test (see 4.6.2)</b>		N
A.3.1	Mounting of samples		N
A.3.2	Test procedure		N
A.3.3	Compliance criterion		N

<b>B</b>	<b>ANNEX B, MOTOR TESTS UNDER ABNORMAL CONDITIONS (see 4.7.2.2 and 5.3.2)</b>		P
B.1	General requirements		N
	Position .....		—
	Manufacturer .....		—
	Type .....		—
	Rated values .....		—
B.2	Test conditions		N
B.3	Maximum temperatures	(see appended table 5.3)	N
B.4	Running overload test	(see appended table 5.3)	N
B.5	Locked-rotor overload test		N
	Test duration (days) .....		—
	Electric strength test: test voltage (V) .....		—
B.6	Running overload test for d.c. motors in secondary circuits		N
B.6.1	General		N
B.6.2	Test procedure		N
B.6.3	Alternative test procedure		N
B.6.4	Electric strength test; test voltage (V) .....		N

IEC/EN 60950-1			
Clause	Requirement + Test	Result + Remark	Verdict
B.7	Locked-rotor overload test for d.c. motors in secondary circuits		P
B.7.1	General		P
B.7.2	Test procedure		P
B.7.3	Alternative test procedure	(see appended table 5.3)	P
B.7.4	Electric strength test; test voltage (V) .....		N
B.8	Test for motors with capacitors	(see appended table 5.3)	N
B.9	Test for three-phase motors	(see appended table 5.3)	N
B.10	Test for series motors		N
	Operating voltage (V) .....		—

<b>C</b>	<b>ANNEX C, TRANSFORMERS (see 1.5.4 and 5.3.3)</b>		N
	Position .....		—
	Manufacturer .....	(see appended table 1.5.1)	—
	Type .....	(see appended table 1.5.1)	—
	Rated values .....	(see appended table 1.5.1)	—
	Method of protection .....		—
C.1	Overload test	(see appended table 5.3)	N
C.2	Insulation	(see appended tables 5.2 and C2)	N
	Protection from displacement of windings .....		N

<b>D</b>	<b>ANNEX D, MEASURING INSTRUMENTS FOR TOUCH-CURRENT TESTS (see 5.1.4)</b>		N
D.1	Measuring instrument		N
D.2	Alternative measuring instrument		N

<b>E</b>	<b>ANNEX E, TEMPERATURE RISE OF A WINDING (see 1.4.13)</b>		N
----------	--	--	---

<b>F</b>	<b>ANNEX F, MEASUREMENT OF CLEARANCES AND CREEPAGE DISTANCES (see 2.10 and Annex G)</b>		N
----------	---	--	---

<b>G</b>	<b>ANNEX G, ALTERNATIVE METHOD FOR DETERMINING MINIMUM CLEARANCES</b>		N
G.1	Clearances		N
G.1.1	General		N



IEC/EN 60950-1			
Clause	Requirement + Test	Result + Remark	Verdict
G.1.2	Summary of the procedure for determining minimum clearances		N
<b>G.2</b>	<b>Determination of mains transient voltage (V)</b>		N
G.2.1	AC mains supply .....		N
G.2.2	Earthed d.c. mains supplies .....		N
G.2.3	Unearthed d.c. mains supplies .....		N
G.2.4	Battery operation .....		N

IEC/EN 60950-1			
Clause	Requirement + Test	Result + Remark	Verdict
<b>G.3</b>	<b>Determination of telecommunication network transient voltage (V) .....</b> :		N
<b>G.4</b>	<b>Determination of required withstand voltage (V)</b>		N
G.4.1	Mains transients and internal repetitive peaks .....		N
G.4.2	Transients from telecommunication networks .....		N
G.4.3	Combination of transients		N
G.4.4	Transients from cable distribution systems		N
<b>G.5</b>	<b>Measurement of transient voltages (V)</b>		N
	a) Transients from a mains supply		N
	For an a.c. mains supply		N
	For a d.c. mains supply		N
	b) Transients from a telecommunication network		N
<b>G.6</b>	<b>Determination of minimum clearances .....</b> :		N
<b>H</b>	<b>ANNEX H, IONIZING RADIATION (see 4.3.13)</b>		N
<b>J</b>	<b>ANNEX J, TABLE OF ELECTROCHEMICAL POTENTIALS (see 2.6.5.6)</b>		N
	Metal(s) used .....		—
<b>K</b>	<b>ANNEX K, THERMAL CONTROLS (see 1.5.3 and 5.3.8)</b>		N
K.1	Making and breaking capacity		N
K.2	Thermostat reliability; operating voltage (V) .....		N
K.3	Thermostat endurance test; operating voltage (V) .....		N
K.4	Temperature limiter endurance; operating voltage (V) .....		N
K.5	Thermal cut-out reliability		N
K.6	Stability of operation	(see appended table 5.3)	N
<b>L</b>	<b>ANNEX L, NORMAL LOAD CONDITIONS FOR SOME TYPES OF ELECTRICAL BUSINESS EQUIPMENT (see 1.2.2.1 and 4.5.2)</b>		P
L.1	Typewriters		N
L.2	Adding machines and cash registers		N
L.3	Erasers		N
L.4	Pencil sharpeners		N
L.5	Duplicators and copy machines		N

IEC/EN 60950-1			
Clause	Requirement + Test	Result + Remark	Verdict
L.6	Motor-operated files		N
L.7	Other business equipment		P

<b>M</b>	<b>ANNEX M, CRITERIA FOR TELEPHONE RINGING SIGNALS (see 2.3.1)</b>		N
M.1	Introduction		N
M.2	Method A		N
M.3	Method B		N
M.3.1	Ringling signal		N
M.3.1.1	Frequency (Hz) .....		—
M.3.1.2	Voltage (V) .....		—
M.3.1.3	Cadence; time (s), voltage (V) .....		—
M.3.1.4	Single fault current (mA) .....		—
M.3.2	Tripping device and monitoring voltage .....		N
M.3.2.1	Conditions for use of a tripping device or a monitoring voltage		N
M.3.2.2	Tripping device		N
M.3.2.3	Monitoring voltage (V) .....		N

<b>N</b>	<b>ANNEX N, IMPULSE TEST GENERATORS (see 1.5.7.2, 1.5.7.3, 2.10.3.9, 6.2.2.1, 7.3.2, 7.4.3 and Clause G.5)</b>		N
N.1	ITU-T impulse test generators		N
N.2	IEC 60065 impulse test generator		N

<b>P</b>	<b>ANNEX P, NORMATIVE REFERENCES</b>		—
----------	--------------------------------------	--	---

<b>Q</b>	<b>ANNEX Q, Voltage dependent resistors (VDRs) (see 1.5.9.1)</b>		N
	- Preferred climatic categories .....		N
	- Maximum continuous voltage .....		N
	- Combination pulse current .....		N
	Body of the VDR Test according to IEC60695-11-5.....		N
	Body of the VDR. Flammability class of material ( min V-1).....		N

IEC/EN 60950-1			
Clause	Requirement + Test	Result + Remark	Verdict
<b>R</b>	<b>ANNEX R, EXAMPLES OF REQUIREMENTS FOR QUALITY CONTROL PROGRAMMES</b>		N
R.1	Minimum separation distances for unpopulated coated printed boards (see 2.10.6.2)		N
R.2	Reduced clearances (see 2.10.3)		N
<b>S</b>	<b>ANNEX S, PROCEDURE FOR IMPULSE TESTING (see 6.2.2.3)</b>		N
S.1	Test equipment		N
S.2	Test procedure		N
S.3	Examples of waveforms during impulse testing		N
<b>T</b>	<b>ANNEX T, GUIDANCE ON PROTECTION AGAINST INGRESS OF WATER (see 1.1.2)</b>		N
			—
<b>U</b>	<b>ANNEX U, INSULATED WINDING WIRES FOR USE WITHOUT INTERLEAVED INSULATION (see 2.10.5.4)</b>		N
			—
<b>V</b>	<b>ANNEX V, AC POWER DISTRIBUTION SYSTEMS (see 1.6.1)</b>		N
V.1	Introduction		N
V.2	TN power distribution systems		N
<b>W</b>	<b>ANNEX W, SUMMATION OF TOUCH CURRENTS</b>		N
W.1	Touch current from electronic circuits		N
W.1.1	Floating circuits		N
W.1.2	Earthed circuits		N
W.2	Interconnection of several equipments		N
W.2.1	Isolation		N
W.2.2	Common return, isolated from earth		N
W.2.3	Common return, connected to protective earth		N
<b>X</b>	<b>ANNEX X, MAXIMUM HEATING EFFECT IN TRANSFORMER TESTS (see clause C.1)</b>		N
X.1	Determination of maximum input current		N
X.2	Overload test procedure		N

IEC/EN 60950-1			
Clause	Requirement + Test	Result + Remark	Verdict
<b>Y</b>	<b>ANNEX Y, ULTRAVIOLET LIGHT CONDITIONING TEST (see 4.3.13.3)</b>		N
Y.1	Test apparatus .....		N
Y.2	Mounting of test samples .....		N
Y.3	Carbon-arc light-exposure apparatus .....		N
Y.4	Xenon-arc light exposure apparatus .....		N
<b>Z</b>	<b>ANNEX Z, OVERVOLTAGE CATEGORIES (see 2.10.3.2 and Clause G.2)</b>		N
<b>AA</b>	<b>ANNEX AA, MANDREL TEST (see 2.10.5.8)</b>		N
<b>BB</b>	<b>ANNEX BB, CHANGES IN THE SECOND EDITION</b>		—
<b>CC</b>	<b>ANNEX CC, Evaluation of integrated circuit (IC) current limiters</b>		N
CC.1	General		N
CC.2	Test program 1.....		N
CC.3	Test program 2.....		N
CC.4	Test program 3.....		N
CC.5	Compliance.....		N
<b>DD</b>	<b>ANNEX DD, Requirements for the mounting means of rack-mounted equipment</b>		N
DD.1	General		N
DD.2	Mechanical strength test, variable N.....		N
DD.3	Mechanical strength test, 250N, including end stops.....		N
DD.4	Compliance.....		N
<b>EE</b>	<b>ANNEX EE, Household and home/office document/media shredders</b>		N
EE.1	General		N
EE.2	Markings and instructions		N
	Use of markings or symbols.....		N
	Information of user instructions, maintenance and/or servicing instructions.....		N
EE.3	Inadvertent reactivation test.....		N
EE.4	Disconnection of power to hazardous moving parts:		N
	Use of markings or symbols.....		N

IEC/EN 60950-1

Clause	Requirement + Test	Result + Remark	Verdict
EE.5	Protection against hazardous moving parts		N
	Test with test finger (Figure 2A) .....		N
	Test with wedge probe (Figure EE1 and EE2) .....		N

IEC/EN 60950-1																																																															
Clause	Requirement + Test	Result + Remark	Verdict																																																												
<b>EN 60950-1:2006/A11:2009/A1:2010/A12:2011/A2:2013 – CENELEC COMMON MODIFICATIONS</b>																																																															
<b>IEC 60950-1, GROUP DIFFERENCES (CENELEC common modifications EN)</b>																																																															
	<p>Clauses, subclauses, notes, tables and figures which are additional to those in IEC60950-1 and it's amendmets are prefixed "Z"</p>		N/A																																																												
Contents  (A2:2013)	<p>Add the following annexes:</p> <p>Annex ZA (normative)                      Normative references to international publications with their corresponding European publications</p> <p>Annex ZB (normative)                      Special national conditions</p> <p>Annex ZD (informative)                    IEC and CENELEC code designations for flexible cords</p>		P																																																												
General	<p>Delete all the "country" notes in the reference document (IEC 60950-1:2005) according to the following list:</p> <table border="0"> <tr> <td>1.4.8 Note 2</td> <td>1.5.1</td> <td>Note 2 &amp; 3</td> <td>1.5.7.1</td> <td>Note</td> </tr> <tr> <td>1.5.8 Note 2</td> <td>1.5.9.4</td> <td>Note</td> <td>1.7.2.1</td> <td>Note 4, 5 &amp; 6</td> </tr> <tr> <td>2.2.3 Note</td> <td>2.2.4</td> <td>Note</td> <td>2.3.2</td> <td>Note</td> </tr> <tr> <td>2.3.2.1 Note 2</td> <td>2.3.4</td> <td>Note 2</td> <td>2.6.3.3</td> <td>Note 2 &amp; 3</td> </tr> <tr> <td>2.7.1 Note</td> <td>2.10.3.2</td> <td>Note 2</td> <td>2.10.5.13</td> <td>Note 3</td> </tr> <tr> <td>3.2.1.1 Note</td> <td>3.2.4</td> <td>Note 3.</td> <td>2.5.1</td> <td>Note 2</td> </tr> <tr> <td>4.3.6 Note 1 &amp; 2</td> <td>4.7</td> <td>Note 4</td> <td>4.7.2.2</td> <td>Note</td> </tr> <tr> <td>4.7.3.1 Note 2</td> <td>5.1.7.1</td> <td>Note 3 &amp; 4</td> <td>5.3.7</td> <td>Note 1</td> </tr> <tr> <td>6 Note 2 &amp; 5</td> <td>6.1.2.1</td> <td>Note 2</td> <td>6.1.2.2</td> <td>Note</td> </tr> <tr> <td>6.2.2 Note</td> <td>6.2.2.1</td> <td>Note 2</td> <td>6.2.2.2</td> <td>Note</td> </tr> <tr> <td>7.1 Note 3</td> <td>7.2</td> <td>Note</td> <td>7.3</td> <td>Note 1 &amp; 2</td> </tr> <tr> <td>G.2.1 Note 2</td> <td>Annex H</td> <td>Note 2</td> <td></td> <td></td> </tr> </table>	1.4.8 Note 2	1.5.1	Note 2 & 3	1.5.7.1	Note	1.5.8 Note 2	1.5.9.4	Note	1.7.2.1	Note 4, 5 & 6	2.2.3 Note	2.2.4	Note	2.3.2	Note	2.3.2.1 Note 2	2.3.4	Note 2	2.6.3.3	Note 2 & 3	2.7.1 Note	2.10.3.2	Note 2	2.10.5.13	Note 3	3.2.1.1 Note	3.2.4	Note 3.	2.5.1	Note 2	4.3.6 Note 1 & 2	4.7	Note 4	4.7.2.2	Note	4.7.3.1 Note 2	5.1.7.1	Note 3 & 4	5.3.7	Note 1	6 Note 2 & 5	6.1.2.1	Note 2	6.1.2.2	Note	6.2.2 Note	6.2.2.1	Note 2	6.2.2.2	Note	7.1 Note 3	7.2	Note	7.3	Note 1 & 2	G.2.1 Note 2	Annex H	Note 2				P
1.4.8 Note 2	1.5.1	Note 2 & 3	1.5.7.1	Note																																																											
1.5.8 Note 2	1.5.9.4	Note	1.7.2.1	Note 4, 5 & 6																																																											
2.2.3 Note	2.2.4	Note	2.3.2	Note																																																											
2.3.2.1 Note 2	2.3.4	Note 2	2.6.3.3	Note 2 & 3																																																											
2.7.1 Note	2.10.3.2	Note 2	2.10.5.13	Note 3																																																											
3.2.1.1 Note	3.2.4	Note 3.	2.5.1	Note 2																																																											
4.3.6 Note 1 & 2	4.7	Note 4	4.7.2.2	Note																																																											
4.7.3.1 Note 2	5.1.7.1	Note 3 & 4	5.3.7	Note 1																																																											
6 Note 2 & 5	6.1.2.1	Note 2	6.1.2.2	Note																																																											
6.2.2 Note	6.2.2.1	Note 2	6.2.2.2	Note																																																											
7.1 Note 3	7.2	Note	7.3	Note 1 & 2																																																											
G.2.1 Note 2	Annex H	Note 2																																																													
General (A1:2010)	<p>Delete all the "country" notes in the reference document (IEC 60950-1:2005/A1:2010) according to the following list:</p> <table border="0"> <tr> <td>1.5.7.1</td> <td>Note</td> <td>6.1.2.1</td> <td>Note 2</td> </tr> <tr> <td>6.2.2.1</td> <td>Note 2</td> <td>EE.3</td> <td>Note</td> </tr> </table>	1.5.7.1	Note	6.1.2.1	Note 2	6.2.2.1	Note 2	EE.3	Note		P																																																				
1.5.7.1	Note	6.1.2.1	Note 2																																																												
6.2.2.1	Note 2	EE.3	Note																																																												
General (A2:2013)	<p>Delete all the "country" notes in the reference document (IEC 60950-1:2005/A2:2013) according to the following list:</p> <table border="0"> <tr> <td>2.7.1</td> <td>Note *</td> <td>2.10.3.1</td> <td>Note 2</td> </tr> </table> <p>6.2.2. Note</p> <p>* Note of secretary: Text of Common Modification remains unchanged.</p>	2.7.1	Note *	2.10.3.1	Note 2		P																																																								
2.7.1	Note *	2.10.3.1	Note 2																																																												
1.1.1 (A1:2010)	<p><b>Replace</b> the text of NOTE 3 by the following.</p> <p>NOTE 3 The requirements of EN 60065 may also be used to meet safety requirements for multimedia equipment. See IEC Guide 112, Guide on the safety of multimedia equipment. For television sets EN 60065 applies.</p>		N																																																												


IEC/EN 60950-1			
Clause	Requirement + Test	Result + Remark	Verdict
1.3.Z1	<p>Add the following subclause:</p> <p>1.3.Z1 Exposure to excessive sound pressure</p> <p>The apparatus shall be so designed and constructed as to present no danger when used for its intended purpose, either in normal operating conditions or under fault conditions, particularly providing protection against exposure to excessive sound pressures from headphones or earphones.</p> <p>NOTE Z1 A new method of measurement is described in EN 50332-1, Sound system equipment: Headphones and earphones associated with portable audio equipment - Maximum sound pressure level measurement methodology and limit considerations - Part 1: General method for "one package equipment", and in EN 50332-2, Sound system equipment: Headphones and earphones associated with portable audio equipment - Maximum sound pressure level measurement methodology and limit considerations - Part 2: Guidelines to associate sets with headphones coming from different manufacturers.</p>		P
(A12:2011)	<p>In EN 60950-1:2006/A12:2011</p> <p>Delete the addition of 1.3.Z1 / EN 60950-1:2006</p> <p>Delete the definition 1.2.3.Z1 / EN 60950-1:2006 /A1:2010</p>		P
1.5.1	<p>Add the following NOTE:</p> <p>NOTE Z1 The use of certain substances in electrical and electronic equipment is restricted within the EU: see Directive 2002/95/EC.</p> <p>(Added info*) New Directive 2011/65/11 *</p>		P
1.7.2.1 (A1:2010)	<p>In addition, for a PORTABLE SOUND SYSTEM, the instructions shall include a warning that excessive sound pressure from earphones and headphones can cause hearing loss.</p>		P
1.7.2.1 (A12:2011)	<p>In EN 60950-1:2006/A12:2011</p> <p>Delete NOTE Z1 and the addition for Portable Sound System.</p> <p>Add the following clause and annex to the existing standard and amendments.</p>		P
	<p><b>Zx Protection against excessive sound pressure from personal music players</b></p>		P



IEC/EN 60950-1			
Clause	Requirement + Test	Result + Remark	Verdict
	<p><b>Zx.1 General</b>                      This sub-clause specifies requirements for protection against excessive sound pressure from personal music players that are closely coupled to the ear. It also specifies requirements for earphones and headphones intended for use with personal music players.</p> <p>A personal music player is a portable equipment for personal use, that:</p> <ul style="list-style-type: none"> <li>- is designed to allow the user to listen to recorded or broadcast sound or video; and</li> <li>- primarily uses headphones or earphones that can be worn in or on or around the ears; and</li> <li>- allows the user to walk around while in use.</li> </ul> <p>NOTE 1 Examples are hand-held or body-worn portable CD players, MP3 audio players, Smart Phones with MP3 type features, PDA's or similar equipment.</p> <p>A personal music player and earphones or headphones intended to be used with personal music players shall comply with the requirements of this sub-clause.</p> <p>The requirements in this sub-clause are valid for music or video mode only.</p> <p>The requirements do not apply:</p> <ul style="list-style-type: none"> <li>- while the personal music player is connected to an external amplifier; or</li> <li>- while the headphones or earphones are not used.</li> </ul> <p>NOTE 2 An external amplifier is an amplifier which is not part of the personal music player or the listening device, but which is intended to play the music as a standalone music player.</p> <p>The requirements do not apply to:</p> <ul style="list-style-type: none"> <li>- hearing aid equipment and professional equipment;</li> </ul> <p>NOTE 3 Professional equipment is equipment sold through special sales channels. All products sold through normal electronics stores are considered not to be professional equipment.</p>		P
	<ul style="list-style-type: none"> <li>- analogue personal music players (personal music players without any kind of digital processing of the sound signal) that are brought to the market before the end of 2015.</li> </ul> <p>NOTE 4 This exemption has been allowed because this technology is falling out of use and it is expected that within a few years it will no longer exist. This exemption will not be extended to other technologies.</p> <p>For equipment which is clearly designed or intended for use by young children, the limits of EN 71-1 apply.</p>		P

IEC/EN 60950-1			
Clause	Requirement + Test	Result + Remark	Verdict
	<p><b>Zx.2 Equipment requirements</b>                      No safety provision is required for equipment that complies with the following:</p> <ul style="list-style-type: none"> <li>- equipment provided as a package (personal music player with its listening device), where the acoustic output <math>L_{Aeq,T}</math> is <math>\leq 85</math> dBA measured while playing the fixed “programme simulation noise” as described in EN 50332-1; and</li> <li>- a personal music player provided with an analogue electrical output socket for a listening device, where the electrical output is <math>\leq 27</math> mV measured as described in EN 50332-2, while playing the fixed “programme simulation noise” as described in EN 50332-1.</li> </ul> <p>NOTE 1 Wherever the term acoustic output is used in this clause, the 30 s A-weighted equivalent sound pressure level <math>L_{Aeq,T}</math> is meant. See also Zx.5 and Annex Zx.</p> <p>All other equipment shall:</p> <ul style="list-style-type: none"> <li>a) protect the user from unintentional acoustic outputs exceeding those mentioned above; and</li> <li>b) have a standard acoustic output level not exceeding those mentioned above, and automatically return to an output level not exceeding those mentioned above when the power is switched off; and</li> </ul>	(See appended table Zx.2)	P

IEC/EN 60950-1			
Clause	Requirement + Test	Result + Remark	Verdict
	<p>c) provide a means to actively inform the user of the increased sound pressure when the equipment is operated with an acoustic output exceeding those mentioned above. Any means used shall be acknowledged by the user before activating a mode of operation which allows for an acoustic output exceeding those mentioned above. The acknowledgement does not need to be repeated more than once every 20 h of cumulative listening time; and</p> <p>NOTE 2 Examples of means include visual or audible signals. Action from the user is always required.</p> <p>NOTE 3 The 20 h listening time is the accumulative listening time, independent how often and how long the personal music player has been switched off.</p> <p>d) have a warning as specified in Zx.3; and</p> <p>e) not exceed the following:</p> <ol style="list-style-type: none"> <li>1) equipment provided as a package (player with its listening device), the acoustic output shall be <math>\leq 100</math> dBA measured while playing the fixed "programme simulation noise" described in EN 50332-1; and</li> <li>2) a personal music player provided with an analogue electrical output socket for a listening device, the electrical output shall be <math>\leq 150</math> mV measured as described in EN 50332-2, while playing the fixed "programme simulation noise" described in EN 50332-1.</li> </ol> <p>For music where the average sound pressure (long term <math>L_{Aeq,T}</math>) measured over the duration of the song is lower than the average produced by the programme simulation noise, the warning does not need to be given as long as the average sound pressure of the song is below the basic limit of 85 dBA. In this case T becomes the duration of the song.</p> <p>NOTE 4 Classical music typically has an average sound pressure (long term <math>L_{Aeq,T}</math>) which is much lower than the average programme simulation noise. Therefore, if the player is capable to analyse the song and compare it with the programme simulation noise, the warning does not need to be given as long as the average sound pressure of the song is below the basic limit of 85 dBA.</p> <p>For example, if the player is set with the programme simulation noise to 85 dBA, but the average music level of the song is only 65 dBA, there is no need to give a warning or ask an acknowledgement as long as the average sound level of the song is not above the basic limit of 85 dBA.</p>		

IEC/EN 60950-1			
Clause	Requirement + Test	Result + Remark	Verdict
	<p><b>Zx.3 Warning</b>                      The warning shall be placed on the equipment, or on the packaging, or in the instruction manual and shall consist of the following:</p> <ul style="list-style-type: none"> <li>– the symbol of Figure 1 with a minimum height of 5 mm; and</li> <li>– the following wording, or similar:</li> </ul> <p>“To prevent possible hearing damage, do not listen at high volume levels for long periods.”</p> <div style="text-align: center;">  </div> <p><b>Figure 1 – Warning label (IEC 60417-6044)</b></p> <p>Alternatively, the entire warning may be given through the equipment display during use, when the user is asked to acknowledge activation of the higher level.</p>		P
	<p><b>Zx.4 Requirements for listening devices (headphones and earphones)</b></p> <p><b>Zx.4.1 Wired listening devices with analogue input</b>                      With 94 dBA sound pressure output <math>L_{Aeq,T}</math>, the input voltage of the fixed “programme simulation noise” described in EN 50332-2 shall be <math>\geq 75</math> mV.                      This requirement is applicable in any mode where the headphones can operate (active or passive), including any available setting (for example built-in volume level control).</p> <p>NOTE The values of 94 dBA – 75 mV correspond with 85dBA – 27 mV and 100 dBA – 150 mV.</p>		N N

IEC/EN 60950-1			
Clause	Requirement + Test	Result + Remark	Verdict
	<p><b>Zx.4.2 Wired listening devices with digital input</b>                      With any playing device playing the fixed “programme simulation noise” described in EN 50332-1 (and respecting the digital interface standards, where a digital interface standard exists that specifies the equivalent acoustic level), the acoustic output <math>L_{Aeq,T}</math> of the listening device shall be <math>\leq 100</math> dBA.</p> <p>This requirement is applicable in any mode where the headphones can operate, including any available setting (for example built-in volume level control, additional sound feature like equalization, etc.).</p> <p>NOTE An example of a wired listening device with digital input is a USB headphone.</p>		N
	<p><b>Zx.4.3 Wireless listening devices</b>                      In wireless mode:</p> <ul style="list-style-type: none"> <li>– with any playing and transmitting device playing the fixed programme simulation noise described in EN 50332-1; and</li> <li>– respecting the wireless transmission standards, where an air interface standard exists that specifies the equivalent acoustic level; and</li> <li>– with volume and sound settings in the listening device (for example built-in volume level control, additional sound feature like equalization, etc.) set to the combination of positions that maximize the measured acoustic output for the abovementioned programme simulation noise, the acoustic output <math>L_{Aeq,T}</math> of the listening device shall be <math>\leq 100</math> dBA.</li> </ul> <p>NOTE An example of a wireless listening device is a Bluetooth headphone.</p>		N
	<p><b>Zx.5 Measurement methods</b>                      Measurements shall be made in accordance with EN 50332-1 or EN 50332-2 as applicable. Unless stated otherwise, the time interval T shall be 30 s.</p> <p>NOTE Test method for wireless equipment provided without listening device should be defined.</p>		N

IEC/EN 60950-1											
Clause	Requirement + Test	Result + Remark	Verdict								
2.7.1	<p>Replace the subclause as follows:</p> <p>Basic requirements</p> <p>To protect against excessive current, short-circuits and earth faults in PRIMARY CIRCUITS, protective devices shall be included either as integral parts of the equipment or as parts of the building installation, subject to the following, a), b) and c):</p> <p>a) except as detailed in b) and c), protective devices necessary to comply with the requirements of 5.3 shall be included as parts of the equipment;</p> <p>b) for components in series with the mains input to the equipment such as the supply cord, appliance coupler, r.f.i. filter and switch, short-circuit and earth fault protection may be provided by protective devices in the building installation;</p>		N								
	<p>c) it is permitted for PLUGGABLE EQUIPMENT TYPE B or PERMANENTLY CONNECTED EQUIPMENT, to rely on dedicated overcurrent and short-circuit protection in the building installation, provided that the means of protection, e.g. fuses or circuit breakers, is fully specified in the installation instructions.</p> <p>If reliance is placed on protection in the building installation, the installation instructions shall so state, except that for PLUGGABLE EQUIPMENT TYPE A the building installation shall be regarded as providing protection in accordance with the rating of the wall socket outlet.</p>		N								
2.7.2	This subclause has been declared 'void'.		N								
3.2.3	Delete the NOTE in Table 3A, and delete also in this table the conduit sizes in parentheses.		N								
3.2.5.1	<p>Replace "60245 IEC 53" by "H05 RR-F";</p> <p>"60227 IEC 52" by "H03 VV-F or H03 VVH2-F";</p> <p>"60227 IEC 53" by "H05 VV-F or H05 VVH2-F2".</p> <p>In Table 3B, replace the first four lines by the following:</p> <table border="0"> <tr> <td>Up to and including 6  </td> <td>0,75<sup>a)</sup>  </td> </tr> <tr> <td>Over 6 up to and including 10  </td> <td>(0,75)<sup>b)</sup>   1,0</td> </tr> <tr> <td>  Over 10 up to and including 16  </td> <td>(1,0)<sup>c)</sup></td> </tr> <tr> <td>1,5  </td> <td></td> </tr> </table> <p>In the conditions applicable to Table 3B delete the words "in some countries" in condition<sup>a)</sup>.</p> <p>In NOTE 1, applicable to Table 3B, delete the second sentence.</p>	Up to and including 6	0,75 <sup>a)</sup>	Over 6 up to and including 10	(0,75) <sup>b)</sup>   1,0	Over 10 up to and including 16	(1,0) <sup>c)</sup>	1,5			N
Up to and including 6	0,75 <sup>a)</sup>										
Over 6 up to and including 10	(0,75) <sup>b)</sup>   1,0										
Over 10 up to and including 16	(1,0) <sup>c)</sup>										
1,5											

IEC/EN 60950-1			
Clause	Requirement + Test	Result + Remark	Verdict
3.2.5.1 (A2:2013)	NOTE Z1 The harmonised code designations corresponding to the IEC cord types are given in Annex ZD		N
3.3.4	In Table 3D, delete the fourth line: conductor sizes for 10 to 13 A, and replace with the following: Over 10 up to and including 16   1,5 to 2,5   1,5 to 4 Delete the fifth line: conductor sizes for 13 to 16 A		N
4.3.13.6 (A1:2010)	Replace the existing NOTE by the following: NOTE Z1 Attention is drawn to: 1999/519/EC: Council Recommendation on the limitation of exposure of the general public to electromagnetic fields 0 Hz to 300 GHz, and 2006/25/EC: Directive on the minimum health and safety requirements regarding the exposure of workers to risks arising from physical agents (artificial optical radiation).		N
	Standards taking into account mentioned Recommendation and Directive which demonstrate compliance with the applicable EU Directive are indicated in the OJEC.		N
Annex H	Replace the last paragraph of this annex by: At any point 10 cm from the surface of the OPERATOR ACCESS AREA, the dose rate shall not exceed 1 µSv/h (0,1 mR/h) (see NOTE). Account is taken of the background level. Replace the notes as follows: NOTE These values appear in Directive 96/29/Euratom. Delete NOTE 2.		N
Bibliography	Additional EN standards.		—
<b>ZA</b>	<b>NORMATIVE REFERENCES TO INTERNATIONAL PUBLICATIONS WITH THEIR CORRESPONDING EUROPEAN PUBLICATIONS</b>		—

ZB ANNEX (normative) SPECIAL NATIONAL CONDITIONS (EN)			
Clause	Requirement + Test	Result - Remark	Verdict
1.2.4.1	In <b>Denmark</b> , certain types of Class I appliances (see 3.2.1.1) may be provided with a plug not establishing earthing conditions when inserted into Danish socket-outlets.		N
1.2.13.14 (A11:2009)	In <b>Norway</b> and <b>Sweden</b> , for requirements see 1.7.2.1 and 7.3 of this annex.		N
1.5.7.1 (A11:2009)	In <b>Finland</b> , <b>Norway</b> and <b>Sweden</b> , resistors bridging BASIC INSULATION in CLASS I PLUGGABLE EQUIPMENT TYPE A must comply with the requirements in 1.5.7.1. In addition when a single resistor is used, the resistor must withstand the resistor test in 1.5.7.2.		N

IEC/EN 60950-1			
Clause	Requirement + Test	Result + Remark	Verdict

<b>ZB ANNEX (normative)</b> <b>SPECIAL NATIONAL CONDITIONS (EN)</b>			
Clause	Requirement + Test	Result - Remark	Verdict
1.5.8	In <b>Norway</b> , due to the IT power system used (see annex V, Figure V.7), capacitors are required to be rated for the applicable line-to-line voltage (230 V).		N
1.5.9.4	In <b>Finland, Norway and Sweden</b> , the third dashed sentence is applicable only to equipment as defined in 6.1.2.2 of this annex.		N



IEC/EN 60950-1			
Clause	Requirement + Test	Result + Remark	Verdict

<b>ZB ANNEX (normative)</b> <b>SPECIAL NATIONAL CONDITIONS (EN)</b>			
Clause	Requirement + Test	Result - Remark	Verdict
1.7.2.1	<p>In <b>Finland, Norway and Sweden</b>, CLASS I PLUGGABLE EQUIPMENT TYPE A intended for connection to other equipment or a network shall, if safety relies on connection to protective earth or if surge suppressors are connected between the network terminals and accessible parts, have a marking stating that the equipment must be connected to an earthed mains socket-outlet. The marking text in the applicable countries shall be as follows:</p> <p>In <b>Finland</b>: “Laite on liitettävä suojakoskettimilla varustettuun pistorasiaan”</p> <p>In <b>Norway</b>: “Apparatet må tilkoples jordet stikkontakt”</p> <p>In <b>Sweden</b>: “Apparaten skall anslutas till jordat uttag”</p>		N
1.7.2.1 (A11:2009)	<p>In <b>Norway and Sweden</b>, the screen of the cable distribution system is normally not earthed at the entrance of the building and there is normally no equipotential bonding system within the building. Therefore the protective earthing of the building installation need to be isolated from the screen of a cable distribution system.</p> <p>It is however accepted to provide the insulation external to the equipment by an adapter or an interconnection cable with galvanic isolator, which may be provided by e.g. a retailer.</p> <p>The user manual shall then have the following or similar information in Norwegian and Swedish language respectively, depending on in what country the equipment is intended to be used in:</p> <p>“Equipment connected to the protective earthing of the building installation through the mains connection or through other equipment with a connection to protective earthing – and to a cable distribution system using coaxial cable, may in some circumstances create a fire hazard. Connection to a cable distribution system has therefore to be provided through a device providing electrical isolation below a certain frequency range (galvanic isolator, see EN 60728-11).”</p>		

IEC/EN 60950-1			
Clause	Requirement + Test	Result + Remark	Verdict

<b>ZB ANNEX (normative)</b> <b>SPECIAL NATIONAL CONDITIONS (EN)</b>			
Clause	Requirement + Test	Result - Remark	Verdict
	<p>NOTE In Norway, due to regulation for installations of cable distribution systems, and in Sweden, a galvanic isolator shall provide electrical insulation below 5 MHz. The insulation shall withstand a dielectric strength of 1,5 kV r.m.s., 50 Hz or 60 Hz, for 1 min.</p> <p>Translation to Norwegian (the Swedish text will also be accepted in Norway):                      "Utstyr som er koplet til beskyttelsesjord via nettplugg og/eller via annet jordtilkoplet utstyr – og er tilkoplet et kabel-TV nett, kan forårsake brannfare. For å unngå dette skal det ved tilkopling av utstyret til kabel-TV nettet installeres en galvanisk isolator mellom utstyret og kabel- TV nettet."                      Translation to Swedish:                      "Utrustning som är kopplad till skyddsjord via jordat vägguttag och/eller via annan utrustning och samtidigt är kopplad till kabel-TV nät kan i vissa fall medföra risk för brand. För att undvika detta skall vid anslutning av utrustningen till kabel-TV nät galvanisk isolator finnas mellan utrustningen och kabel-TV nätet."</p>		N
1.7.2.1 (A2:2013)	<p>In <b>Denmark</b>, CLASS I PLUGGABLE EQUIPMENT TYPE A intended for connection to other equipment or a network shall, if safety relies on connection to protective earth or if surge suppressors are connected between the network terminals and accessible parts, have a marking stating that the equipment must be connected to an earthed mains socket-outlet.</p> <p>The marking text in <b>Denmark</b> shall be as follows:                      In <b>Denmark</b>: "Apparatets stikprop skal tilsluttes en stikkontakt med jord, som giver forbindelse til stikproppens jord."</p>		N
1.7.5  1.7.5 (A11:2009)	<p>In <b>Denmark</b>, socket-outlets for providing power to other equipment shall be in accordance with the Heavy Current Regulations, Section 107-2-D1, Standard Sheet DK 1-3a, DK 1-5a or DK 1-7a, when used on Class I equipment. For STATIONARY EQUIPMENT the socket-outlet shall be in accordance with Standard Sheet DK 1-1b or DK 1-5a.</p> <p>For <b>CLASS II EQUIPMENT</b> the socket outlet shall be in accordance with Standard Sheet DKA 1-4a.</p>		N

IEC/EN 60950-1			
Clause	Requirement + Test	Result + Remark	Verdict

<b>ZB ANNEX (normative)</b> <b>SPECIAL NATIONAL CONDITIONS (EN)</b>			
Clause	Requirement + Test	Result - Remark	Verdict
1.7.5 (A2:2013)	<p>In <b>Denmark</b>, socket-outlets for providing power to other equipment shall be in accordance with the DS 60884-2-D1:2011.</p> <p>For class I equipment the following Standard Sheets are applicable: DK 1-3a, DK 1-1c, DK 1-1d, DK 1-5a or DK 1-7a, with the exception for STATIONARY EQUIPMENT where the socket-outlets shall be in accordance with Standard Sheet DK 1-1b, DK 1-1c, DK 1-1d or DK 1-5a.</p> <p>Socket outlets intended for providing power to Class II apparatus with a rated current of 2,5 A shall be in accordance with DS 60884-2-D1 standard sheet DKA 1-4a. Other current rating socket outlets shall be in compliance with by DS 60884-2-D1 Standard Sheet DKA 1-3a or DKA 1-3b.</p> <p>Justification the Heavy Current Regulations, 6c</p>		N
2.2.4	In <b>Norway</b> , for requirements see 1.7.2.1, 6.1.2.1 and 6.1.2.2 of this annex.		N
2.3.2	In <b>Finland, Norway and Sweden</b> there are additional requirements for the insulation. See 6.1.2.1 and 6.1.2.2 of this annex.		N
2.3.4	In <b>Norway</b> , for requirements see 1.7.2.1, 6.1.2.1 and 6.1.2.2 of this annex.		N
2.6.3.3	In the <b>United Kingdom</b> , the current rating of the circuit shall be taken as 13 A, not 16 A.		N
2.7.1	In the <b>United Kingdom</b> , to protect against excessive currents and short-circuits in the PRIMARY CIRCUIT of DIRECT PLUG-IN EQUIPMENT, tests according to 5.3 shall be conducted, using an external protective device rated 30 A or 32 A. If these tests fail, suitable protective devices shall be included as integral parts of the DIRECT PLUG-IN EQUIPMENT, so that the requirements of 5.3 are met.		N
2.10.5.13	In <b>Finland, Norway and Sweden</b> , there are additional requirements for the insulation, see 6.1.2.1 and 6.1.2.2 of this annex.		N
3.2.1.1	<p>In <b>Switzerland</b>, supply cords of equipment having a RATED CURRENT not exceeding 10 A shall be provided with a plug complying with SEV 1011 or IEC 60884-1 and one of the following dimension sheets:</p> <p>SEV 6532-2.1991 Plug Type 15 3P+N+PE 250/400 V, 10 A</p>		N

IEC/EN 60950-1			
Clause	Requirement + Test	Result + Remark	Verdict

<b>ZB ANNEX (normative)</b> <b>SPECIAL NATIONAL CONDITIONS (EN)</b>			
Clause	Requirement + Test	Result - Remark	Verdict
	SEV 6533-2.1991 Plug Type 11 L+N 250 V, 10 A SEV 6534-2.1991 Plug Type 12 L+N+PE 250 V, 10 A In general, EN 60309 applies for plugs for currents exceeding 10 A. However, a 16 A plug and socket-outlet system is being introduced in Switzerland, the plugs of which are according to the following dimension sheets, published in February 1998: SEV 5932-2.1998: Plug Type 25 , 3L+N+PE 230/400 V, 16 A SEV 5933-2.1998: Plug Type 21, L+N, 250 V, 16A SEV 5934-2.1998: Plug Type 23, L+N+PE 250 V, 16 A		
3.2.1.1	<p>In <b>Denmark</b>, supply cords of single-phase equipment having a rated current not exceeding 13 A shall be provided with a plug according to the Heavy Current Regulations, Section 107-2-D1.</p> <p>CLASS I EQUIPMENT provided with socket-outlets with earth contacts or which are intended to be used in locations where protection against indirect contact is required according to the wiring rules shall be provided with a plug in accordance with standard sheet DK 2-1a or DK 2-5a.</p> <p>If poly-phase equipment and single-phase equipment having a RATED CURRENT exceeding 13 A is provided with a supply cord with a plug, this plug shall be in accordance with the Heavy Current Regulations, Section 107-2-D1 or EN 60309-2.</p>		N

IEC/EN 60950-1			
Clause	Requirement + Test	Result + Remark	Verdict

<b>ZB ANNEX (normative)</b> <b>SPECIAL NATIONAL CONDITIONS (EN)</b>			
--	--	--	--

Clause	Requirement + Test	Result - Remark	Verdict
3.2.1.1 (A2:2013)	<p>In <b>Denmark</b>, supply cords of single-phase equipment having a rated current not exceeding 13 A shall be provided with a plug according to DS 60884-2-D1.</p> <p>CLASS I EQUIPMENT provided with socket-outlets with earth contacts or which are intended to be used in locations where protection against indirect contact is required according to the wiring rules shall be provided with a plug in accordance with standard sheet DK 2-1a or DK 2-5a.</p> <p>If a single-phase equipment having a RATED CURRENT exceeding 13 A or if a poly-phase equipment is provided with a supply cord with a plug, this plug shall be in accordance with the standard sheets DK 6-1a in DS 60884-2-D1 or EN 60309-2.</p> <p>Justification the Heavy Current Regulations, 6c</p>		N
3.2.1.1	<p>In <b>Spain</b>, supply cords of single-phase equipment having a rated current not exceeding 10 A shall be provided with a plug according to UNE 20315:1994.</p> <p>Supply cords of single-phase equipment having a rated current not exceeding 2,5 A shall be provided with a plug according to UNE-EN 50075:1993.</p> <p>CLASS I EQUIPMENT provided with socket-outlets with earth contacts or which are intended to be used in locations where protection against indirect contact is required according to the wiring rules, shall be provided with a plug in accordance with standard UNE 20315:1994.</p> <p>If poly-phase equipment is provided with a supply cord with a plug, this plug shall be in accordance with UNE-EN 60309-2.</p>		N
3.2.1.1	<p>In the <b>United Kingdom</b>, apparatus which is fitted with a flexible cable or cord and is designed to be connected to a mains socket conforming to BS 1363 by means of that flexible cable or cord and plug, shall be fitted with a 'standard plug' in accordance with Statutory Instrument 1768:1994 - The Plugs and Sockets etc. (Safety) Regulations 1994, unless exempted by those regulations.</p> <p>NOTE 'Standard plug' is defined in SI 1768:1994 and essentially means an approved plug conforming to BS 1363 or an approved conversion plug.</p>		N

IEC/EN 60950-1			
Clause	Requirement + Test	Result + Remark	Verdict

<b>ZB ANNEX (normative)</b> <b>SPECIAL NATIONAL CONDITIONS (EN)</b>			
Clause	Requirement + Test	Result - Remark	Verdict
3.2.1.1	In <b>Ireland</b> , apparatus which is fitted with a flexible cable or cord and is designed to be connected to a mains socket conforming to I.S. 411 by means of that flexible cable or cord and plug, shall be fitted with a 13 A plug in accordance with Statutory Instrument 525:1997 - National Standards Authority of Ireland (section 28) (13 A Plugs and Conversion Adaptors for Domestic Use) Regulations 1997.		N
3.2.4	In <b>Switzerland</b> , for requirements see 3.2.1.1 of this annex.		N
3.2.5.1	In the <b>United Kingdom</b> , a power supply cord with conductor of 1,25 mm <sup>2</sup> is allowed for equipment with a rated current over 10 A and up to and including 13 A.		N
3.3.4	In the <b>United Kingdom</b> , the range of conductor sizes of flexible cords to be accepted by terminals for equipment with a RATED CURRENT of over 10 A up to and including 13 A is: • 1,25 mm <sup>2</sup> to 1,5 mm <sup>2</sup> nominal cross-sectional area.		N
4.3.6	In the <b>United Kingdom</b> , the torque test is performed using a socket outlet complying with BS 1363 part 1:1995, including Amendment 1:1997 and Amendment 2:2003 and the plug part of DIRECT PLUG-IN EQUIPMENT shall be assessed to BS 1363: Part 1, 12.1, 12.2, 12.3, 12.9, 12.11, 12.12, 12.13, 12.16 and 12.17, except that the test of 12.17 is performed at not less than 125 °C. Where the metal earth pin is replaced by an Insulated Shutter Opening Device (ISOD), the requirements of clauses 22.2 and 23 also apply.		N
4.3.6	In <b>Ireland</b> , DIRECT PLUG-IN EQUIPMENT is known as plug similar devices. Such devices shall comply with Statutory Instrument 526:1997 - National Standards Authority of Ireland (Section 28) (Electrical plugs, plug similar devices and sockets for domestic use) Regulations, 1997.	Considered when assessed to the national standard.	N

IEC/EN 60950-1			
Clause	Requirement + Test	Result + Remark	Verdict

<b>ZB ANNEX (normative)</b> <b>SPECIAL NATIONAL CONDITIONS (EN)</b>			
Clause	Requirement + Test	Result - Remark	Verdict
5.1.7.1	<p>In <b>Finland, Norway and Sweden</b> TOUCH CURRENT measurement results exceeding 3,5 mA r.m.s. are permitted only for the following equipment:</p> <ul style="list-style-type: none"> <li>• STATIONARY PLUGGABLE EQUIPMENT TYPE A that  is intended to be used in a RESTRICTED ACCESS LOCATION where equipotential bonding has been applied, for example, in a telecommunication centre; and  has provision for a permanently connected PROTECTIVE EARTHING CONDUCTOR; and  is provided with instructions for the installation of that conductor by a SERVICE PERSON;</li> <li>• STATIONARY PLUGGABLE EQUIPMENT TYPE B;</li> <li>• STATIONARY PERMANENTLY CONNECTED EQUIPMENT.</li> </ul>		N

IEC/EN 60950-1			
Clause	Requirement + Test	Result + Remark	Verdict

<b>ZB ANNEX (normative)</b> <b>SPECIAL NATIONAL CONDITIONS (EN)</b>			
Clause	Requirement + Test	Result - Remark	Verdict
6.1.2.1 (A1:2010)	<p>In <b>Finland, Norway and Sweden</b>, add the following text between the first and second paragraph of the compliance clause:</p> <p>If this insulation is solid, including insulation forming part of a component, it shall at least consist of either</p> <ul style="list-style-type: none"> <li>- two layers of thin sheet material, each of which shall pass the electric strength test below, or</li> <li>- one layer having a distance through insulation of at least 0,4 mm, which shall pass the electric strength test below.</li> </ul> <p>Alternatively for components, there is no distance through insulation requirements for the insulation consisting of an insulating compound completely filling the casing, so that CLEARANCES and CREEPAGE DISTANCES do not exist, if the component passes the electric strength test in accordance with the compliance clause below and in addition</p> <ul style="list-style-type: none"> <li>- passes the tests and inspection criteria of 2.10.11 with an electric strength test of 1,5 kV multiplied by 1,6 (the electric strength test of 2.10.10 shall be performed using 1,5 kV), and</li> <li>- is subject to ROUTINE TESTING for electric strength during manufacturing, using a test voltage of 1,5 kV.</li> </ul>		N



IEC/EN 60950-1			
Clause	Requirement + Test	Result + Remark	Verdict

<b>ZB ANNEX (normative)</b> <b>SPECIAL NATIONAL CONDITIONS (EN)</b>			
Clause	Requirement + Test	Result - Remark	Verdict
	<p>It is permitted to bridge this insulation with an optocoupler complying with 2.10.5.4 b).</p> <p>It is permitted to bridge this insulation with a capacitor complying with EN 60384-14:2005, subclass Y2.</p> <p>A capacitor classified Y3 according to EN 60384-14:2005, may bridge this insulation under the following conditions:</p> <ul style="list-style-type: none"> <li>- the insulation requirements are satisfied by having a capacitor classified Y3 as defined by EN 60384-14, which in addition to the Y3 testing, is tested with an impulse test of 2,5 kV defined in EN 60950-1:2006, 6.2.2.1;</li> <li>- the additional testing shall be performed on all the test specimens as described in EN 60384-14:</li> <li>- the impulse test of 2,5 kV is to be performed before the endurance test in EN 60384-14, in the sequence of tests as described in EN 60384-14.</li> </ul>		N
6.1.2.2	<p>In <b>Finland, Norway and Sweden</b>, the exclusions are applicable for PERMANENTLY CONNECTED EQUIPMENT, PLUGGABLE EQUIPMENT TYPE B and equipment intended to be used in a RESTRICTED ACCESS LOCATION where equipotential bonding has been applied, e.g. in a telecommunication centre, and which has provision for a permanently connected PROTECTIVE EARTHING CONDUCTOR and is provided with instructions for the installation of that conductor by a SERVICE PERSON.</p>		N
7.2	<p>In <b>Finland, Norway and Sweden</b>, for requirements see 6.1.2.1 and 6.1.2.2 of this annex.</p> <p>The term TELECOMMUNICATION NETWORK in 6.1.2 being replaced by the term CABLE DISTRIBUTION SYSTEM.</p>		N
7.3 (A11:2009)	<p>In <b>Norway and Sweden</b>, for requirements see 1.2.13.14 and 1.7.2.1 of this annex.</p>		N

1.5.1 TABLE: List of critical components					P
Object/part No.	Manufacturer/trademark	Type/model	Technical data	Standard	Mark(s) of conformity <sup>1)</sup>
Power Adapter(EU Plug)	SHENZHEN GUANGYUANSHE NG TECHNOLOGY CO.,LTD	Y-853C-5010	Input: 100-240V~, 50/60Hz, 0.15A Output: 5VDC1.0A, ta: 40°C	EN 60950	LCS test report no.: LCS19091607 3AS
Power Adapter(UK Plug)	SHENZHEN GUANGYUANSHE NG TECHNOLOGY CO.,LTD	Y-853C-5010	Input: 100-240V~, 50/60Hz, 0.15A Output: 5VDC1.0A, ta: 25°C	EN 60950	LCS test report no.: LCS19112514 7AS
Li-ion Battery	SHENZHEN ZHPNGNUOTONG CHUANG TECHNOLOGY CO.,LTD	INOI 2/2 Lite 2019	3.8V, 2250mAh, 8.55Wh	IEC/EN 62133-2: 2017	LCS test report no.: LCS19112514 6AS
Flash LED	Everlight Electronics Co., Ltd.	ELCH Series	DC350mA, Risk Group 1 (EN 62471) Exempt Group (IEC 62471)	IEC 62471: 2006 EN 62471: 2008	TUV Rheinland Report No.: 10031507 001
LCD screen	Superview	G397APA885 A1(GA3228 ) Version V00	3.97 ", 0.108(W) x 0.108 (L)mm	EN 60950-1	Tested with appliance
Speaker	Shenzhen huayinkai electronics co. LTD	X31140326-0001	8Ohm, 0.7W	EN 60950-1	Tested with appliance
Vibration motor	Hubei kailong mechanical electronics co. LTD	F240	DC3V, 80mA max.	EN 60950-1	Tested with appliance
PCB	TONGYUAN TECHNOLOGY HUIZHOU CO LTD	TY-11	V-1, 130°C	UL 796	UL E486376
	Various	Various	V-1 or better, min. 130°C	UL 796	UL
Plastic enclosure	SHENZHEN HALCYON NEW MATERIALS CO LTD	PC201 VG-20R (a)	V-0, 80°C	UL 94	UL E233919

Supplementary information: <sup>1)</sup> Provided evidence ensures the agreed level of compliance.

1.6.2 TABLE: Electrical data (in normal conditions)						P
U (V)	I (A)	I rated (A)	P (W)	Fuse #	I fuse (A)	Condition/status
5	0.992	1	4.96	--	--	Charged by external power supply with fully discharged battery and normal operation.

Remark: The most unfavorable condition was considered.

<b>2.1.1.5 c) 1)</b>	<b>TABLE: max. V, A, VA test</b>				<b>N</b>
Voltage (rated) (V)	Current (rated) (A)	Voltage (max.) (V)	Current (max.) (A)	VA (max.) (VA)	
--	--	--	--	--	

<b>2.1.1.5 c) 2)</b>	<b>TABLE: stored energy</b>		<b>N</b>
Capacitance C (μF)	Voltage U (V)	Energy E (J)	
--	--	--	
supplementary information:			

<b>2.2.2</b>	<b>TABLE: Hazardous voltage measurement</b>			<b>N</b>
Transformer	Location	max. Voltage		Voltage Limitation Component
		V peak	V d.c.	
--	--	--	--	--

<b>2.2.3</b>	<b>TABLE: SELV voltage measurement</b>		<b>N</b>
Location	Voltage measured (V)	Comments	
--	--	--	

<b>2.4.2</b>	<b>TABLE: limited current circuit measurement</b>					<b>N</b>
Location	Voltage (V)	Current (mA)	Freq. (kHz)	Limit (mA)	Comments	
--	--	--	--	--	--	

<b>2.5</b>	<b>TABLE: Limited power sources</b>					<b>N</b>
Circuit output tested:						
Note: Measured Uoc (V) with all load circuits disconnected:						
Components	Sample No.	Uoc (V)	I <sub>sc</sub> (A)		VA	
			Meas.	Limit	Meas.	Limit
Normal	--	--	--	8	--	100
Single fault	--	--	--	8	--	100
supplementary information:						

<b>2.10.2</b>	<b>Table: working voltage measurement</b>			<b>N</b>
Location	RMS voltage (V)	Peak voltage (V)	Comments	
--	--	--	--	
Note:				

<b>2.10.3 and 2.10.4</b>	<b>TABLE: Clearance and creepage distance measurements</b>						<b>N</b>
Clearance (cl) and creepage distance (cr) at/of/between:	U peak (V)	U r.m.s. (V)	Required cl (mm)	cl (mm)	Required cr (mm)	cr (mm)	
--	--	--	--	--	--	--	

<b>2.10.5</b>	<b>TABLE: Distance through insulation measurements</b>					<b>N</b>
Distance through insulation (DTI) at/of:	U peak (V)	U rms (V)	Test voltage (V)	Required DTI (mm)	DTI (mm)	
--	--	--	--	--	--	
Supplementary information:						

<b>4.3.8</b>	<b>TABLE: Batteries</b>								<b>P</b>
The tests of 4.3.8 are applicable only when appropriate battery data is not available								-	--
Is it possible to install the battery in a reverse polarity position?	No possible								--
	Non-rechargeable batteries			Rechargeable batteries					
	Discharging		Un-intentional charging	Charging(mA)		Discharging(mA)		Reversed charging	
	Meas. current	Manuf. Specs.		Meas. current	Manuf. Specs.	Meas. current	Manuf. Specs.	Meas. current	Manuf. Specs.
Max. current during normal condition	--	--	--	968	2250	839	2250	--	--
Max. current during fault condition	--	--	--	981	2250	852	2250	--	--
Test results:								Verdict	
- Chemical leaks								P	
- Explosion of the battery								P	
- Emission of flame or expulsion of molten metal								P	
- Electric strength tests of equipment after completion of tests								N	
Supplementary information:									

<b>4.3.13.5</b>	<b>Emission limits for risk groups of continuous wave lamps (based on EU Directive 2006/25/EC)</b>						<b>N</b>
Risk	Action spectrum	Symbol	Units	Emission Measurement			
				Exempt	Low risk	Mod risk	

4.3.13.5				Emission limits for risk groups of continuous wave lamps (based on EU Directive 2006/25/EC)					N
				Limit	Result	Limit	Result	Limit	Result
Actinic UV	$S_{UV}(\lambda)$	$E_s$	$W \cdot m^{-2}$	0,001	--	0.003		0.03	-
Near UV		$E_{UVA}$	$W \cdot m^{-2}$	10	--	33		100	-
Blue light	$B(\lambda)$	$L_B$	$W \cdot m^{-2} \cdot sr^{-1}$	100	--	10000		4000000	-
Blue light, small source	$B(\lambda)$	$E_B$	$W \cdot m^{-2}$	1.0*	--	1,0		400	-
Retinal thermal	$R(\lambda)$	$L_R$	$W \cdot m^{-2} \cdot sr^{-1}$	$28000/\alpha$	--	$28000/\alpha$		$71000/\alpha$	-
Retinal thermal, weak visual stimulus**	$R(\lambda)$	$L_{IR}$	$W \cdot m^{-2} \cdot sr^{-1}$	$6000/\alpha$	--	$6000/\alpha$		$6000/\alpha$	-
IR radiation, eye		$E_{IR}$	$W \cdot m^{-2}$	100	--	570		3200	-
* Small source defined as one with $\alpha < 0,011$ radian. Averaging field of view at 10000 s is 0,1 radian.									
** Involves evaluation of non-GLS source									

4.5 TABLE: Thermal requirements							P
Supply voltage(V) .....	Charging		Discharging		—		
Maximum measured temperature T of part/at:	T (°C)		T (°C)		Allowed Tmax (°C)		
PCB near U1	49.0		45.5		130		
Battery body	41.0		39.8		Ref.		
Enclosure inside near U1	43.3		39.4		80		
Enclosure outside near U1	41.8		37.4		75		
Button	36.8		34.8		75		
Screen	41.3		38.0		65		
Adapter	44.1		--		95		
Ambient	25.0		25.0		--		
Remark: The most unfavorable condition was considered.							
Temperature T of winding:	t1 (°C)	R1 (Ω)	t2 (°C)	R2 (Ω)	T (°C)	Allowed Tmax (°C)	Insulation class
--	--	--	--	--	--	--	--

4.5.2 TABLE: ball pressure test of thermoplastic parts				N
allowed impression diameter (mm)		:		≤ 2 mm
Part		Test temperature (°C)		Impression diameter (mm)
--		--		--

4.7 TABLE: Resistance to fire			P
Part under test	Test temperature (°C)		Result
--	--		--
Note: see table 1.5.1.			

5.1 TABLE: touch current measurement				N
Condition	L → terminal A (mA)	N → terminal A (mA)	Limit (mA)	Comments
--	--	--	--	--

5.2 TABLE: Electric strength tests, impulse tests and voltage surge tests			N
Test voltage applied between:		Test voltage (V)	Breakdown
Note: Test voltage a.c./d.c.			

5.3		TABLE: Fault condition tests						P
		ambient temperature (°C) .....				25.0°C		--
		model/type of power supply .....				--		--
		manufacturer of power supply .....				--		--
		rated markings of power supply .....				--		--
No.	Component no.	Fault	Test voltage (V)	Test time	Fuse no.	Fuse current (A)	Result	
1	Battery (+,-)	S-C	5Vdc	10min	--	--	After SC, battery no fire, no explosion and no leakage, no hazard.	
2	C1 on battery pack	S-C	5Vdc	10min	--	--	After SC Unit shut down No damaged components and no hazard were found.	
3	R1 on battery pack	S-C	5Vdc	7h	--	--	Unit is normal working. No damaged components and no hazard were found.	
4	Battery	Over charge	5Vdc	7h	--	--	Unit is normal working. No damaged components and no hazard were found.	
5	Battery (B-to P-	S-C (Over charge)	5Vdc	7h	--	--	Unit is normal working. No damaged components and no hazard were found.	
6	U202 (pin1-5.6.7)	S-C (Over charge)	5Vdc	7h	--	--	Unit is normal working. No damaged components and no hazard were found.	
7	C1 on battery pack	S-C	Fully battery	10min	--	--	After SC Unit shut down No damaged components and no hazard were found.	
8	R1 on battery pack	S-C	Fully battery	7h	--	--	Unit is normal working. No damaged components and no hazard were found.	
9	Battery	Over discharge	Fully battery	7h	--	--	Unit is normal working. No damaged components and no hazard were found.	
10	Battery (B-to P-	S-C (Over discharge)	Fully battery	7h	--	--	Unit is normal working. No damaged components and no hazard were found.	
11	Speaker	S-C	Fully battery	10min	--	--	Unit without voice no damage no hazard.	
12	Vibration	Blocked	3.0	7h	--	--	No high temperature rise no hazard.	
Supplementary information: s-c = short-circuited. o-c = open-circuited. o-l=overloaded.								

Zx.2	TABLE: Measured maximum output voltage	N
Measured maximum output voltage Vm (mV)		Test duration

Left channel	Right channel	
--	--	30s
Requirement: $\leq 150\text{mV}$ .		

Zx.2	TABLE: Measured maximum output voltage(When warning appeared)		N
Measured maximum output voltage Vm (mV)		Test duration	
Left channel	Right channel		
--	--	30s	
Requirement: $\leq 27\text{mV}$ .			

Zx.2	TABLE: Measured maximum sound pressure		N
No. of measurement	Measured $L_{Aeq}$ (dB (A-weighted))		Test duration
	Left channel	Right channel	
Average value	--	--	30s
Requirement: The $L_{Aeq}$ is not more than 100dB(A).			

Zx.2	TABLE: Measured maximum sound pressure(When warning appeared)		N
No. of measurement	Measured $L_{Aeq}$ (dB (A-weighted))		Test duration
	Left channel	Right channel	
Average value	--	--	30s
Requirement: The $L_{Aeq}$ is not more than 85dB(A).			



## Attachment 1

### Maximum sound pressure test Test specification Standard EN 50332-2:2013 TEST DESCRIPTION

#### Maximum sound pressure Measurement Measurement Method

The method of measurement was described in the order related to the limitation of the maximum output voltage level at the phone jack delivered by the EUT, in accordance with sub-clause 5.2 of EN 50332-2:2013.

- a.** The test signal used was a programme simulation noise in accordance with clause 5 of EN 50332-1:2013.
- b.** The player phone output was loaded with a resistive load of  $32\Omega$  during the measurement.
- c.** During the measurement, all controls were adjusted to produce the maximum output voltage level at the phone output.
- d.** The sum of the maximum wide band output voltage was measured.

#### Measurement Results

Measurement results showed the maximum RMS voltage for each third-octave frequency bandwidth and the sum of RMS voltage of the output.

## Attachment 2

### Maximum sound pressure test Test specification Standard EN 50332-1:2013 TEST DESCRIPTION

#### Maximum sound pressure Measurement Measurement Method

The device under test (DUT) plays the recorded test signal. Earphones or headphones shall be correctly positioned on the HATS. The sound pressure level emitted by the earphones or headphones of the portable audio equipment is measured, for both right and left ear, by a third octave analyzer connected to the microphone of the HATS ear simulator. The A-weighting curve is applied

Tests are repeated five times for each ear, and the headphone shall be removed and repositioned before each measurement

The A-weighted equivalent continuous sound pressure level  $L_{Aeq}$  shall be determined for each measurement, using an averaging time of 30s or more

The maximum sound pressure level considered as the test result is the mean value of all  $L_{Aeq}$  measurements.

ATTACHMENT 3-PHOTOS



Fig.1



Fig.2



Fig.3



Fig.4

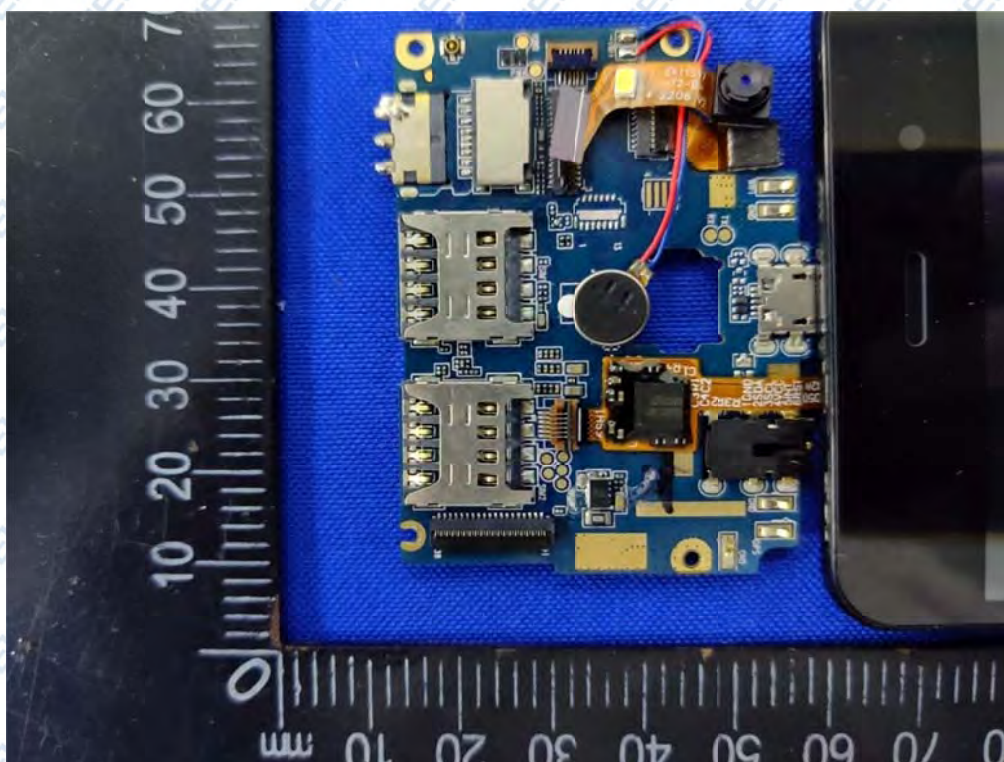


Fig.5

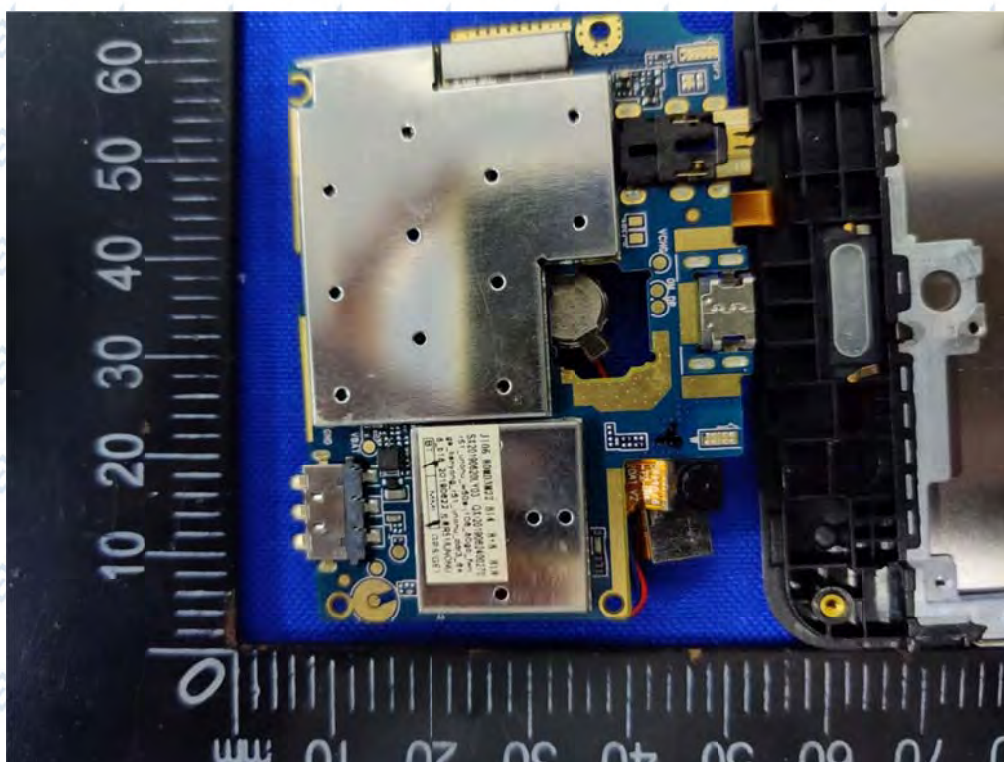


Fig.6



Fig.7



Fig.8

\*\*\*END OF REPORT\*\*\*